

Get Involved as Partners in Shaping Resilient Communities

ANJEC Environmental Congress

October 20, 2012

Ms. Megan Jadrosich, Regional Environmental Officer
Department of Homeland Security-Federal Emergency Management Agency, Region 2



FEMA

OFFICE OF ENVIRONMENTAL PLANNING AND HISTORIC PRESERVATION
Partners in shaping resilient communities

Disasters Incidents in NJ

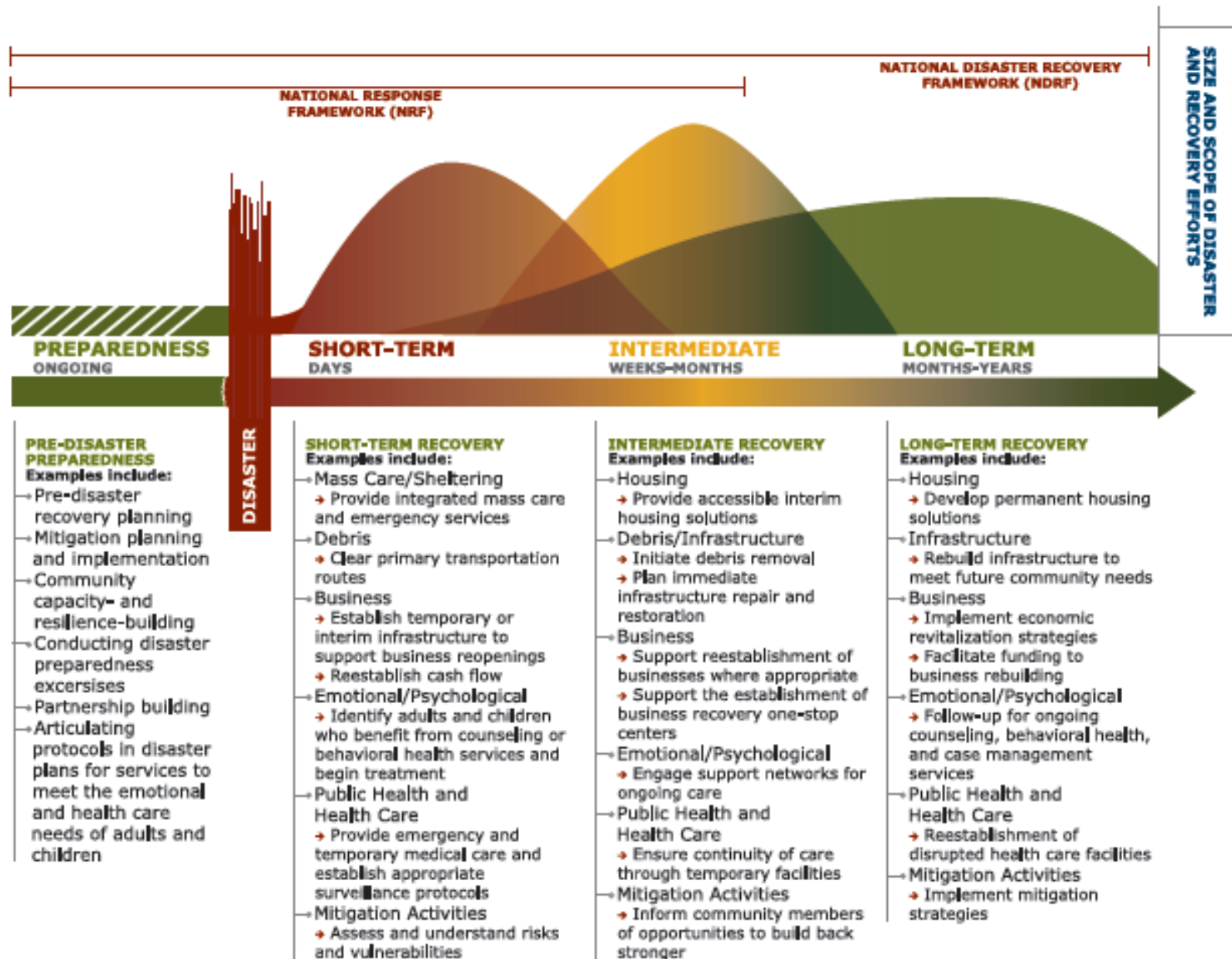
- June 30, 2012 Severe Storms & Straight-Line Winds
- Oct 29, 2011 Severe Storm
- Sept. 28-Oct 6, 2011 Remnants of Tropical Storm Lee
- Aug 27-Sep 5, 2011 Hurricane Irene
- Aug 13-15, 2011 Severe Storms and Flooding
- Dec 26-27, 2010 Winter Storm
- Mar 12-Apr 15, 2010 Severe Storms and Flooding
- Feb 5-6, 2010 Severe Winter Storm and Snowstorm
- Dec 19-20, 2009 Snowstorm
- Nov 11-15, 2009 Severe Storms and Flooding (Ida & Nor'easter)
- May 15, 2007 NJ Warren Grove Fire
- Apr 14-20, 2007 Severe Storms and Inland and Coastal Flooding
- Jun 23-Jul 10, 2006 Severe Storms and Flooding
- Apr 1-Apr 3, 2005 Severe Storms and Flooding
- Sep 18-Oct 1, 2004 Tropical Depression Ivan



FEMA

OFFICE OF ENVIRONMENTAL PLANNING AND HISTORIC PRESERVATION
PARTNERS IN SHAPING RESILIENT COMMUNITIES

FIGURE 1. RECOVERY CONTINUUM – DESCRIPTION OF ACTIVITIES BY PHASE



EHP – Partners in Shaping Resilient Communities

Environmental and Historic Preservation (EHP) Compliance

Promote Stewardship of Human Environment



FEMA

OFFICE OF ENVIRONMENTAL PLANNING AND HISTORIC PRESERVATION
PARTNERS IN SHAPING RESILIENT COMMUNITIES

Grant Programs that Involved Environmental Review

Approximate Annual Number of Region 2 Projects (FY12)

- **Disaster Recovery**
 - Public Assistance

20,000+
- **Hazard Mitigation Grant Program**

>100
(+multiple home buyouts-elevations)
- **Hazard Mitigation Assistance (non-disaster)**
 - Flood Mitigation Assistance, Repetitive Flood Claims, Pre-Disaster Mitigation, and Severe Repetitive Loss

>50
- **DHS-FEMA Grant Programs Directorate - Preparedness**
 - Port Security, Transit Security, Urban Area Security Initiative, Buffer Zone Protection, Assistance to Firefighters, Emergency Operation Center, and Homeland Security Grant Program.

4,000 (HQ)
200 (R2)

Direct Federal Actions

**Individual Assistance – Temporary Housing
Federal Facilities, Communication Towers**



FEMA

OFFICE OF ENVIRONMENTAL PLANNING AND HISTORIC PRESERVATION
PARTNERS IN SHAPING RESILIENT COMMUNITIES

Types of Projects

- Emergency Protective Services & Debris Management
- Retrofits to existing built environment
- Repair/replacement of existing facilities
- Modifications to existing rights-of-way
- New construction
- Building additions

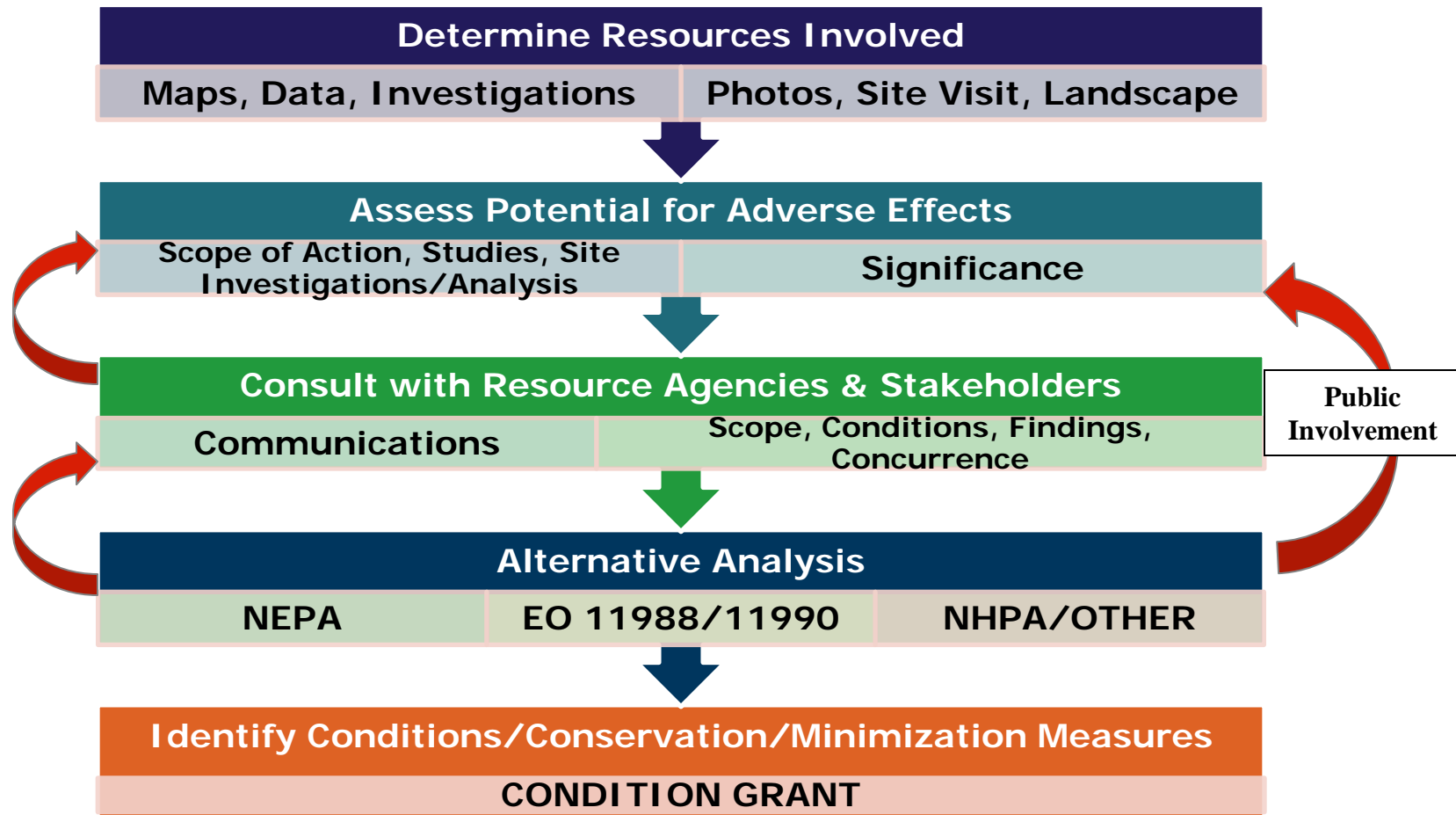


Decision-Making Process

- 90% + Categorical Exclusion for NEPA Review or Statutory Exclusion
- Endangered Species Act
- National Historic Preservation Act
- EO 11988/11990 Floodplain Management & Wetlands Protection
 - 44CFRPart9 Eight-Step Decision-Making Process
- Magnuson Stevens Fishery Conservation and Management Act
- Coastal Zone Management Act
- Migratory Bird Treaty Act
- EO 13112 Invasive Species
- Wild & Scenic Rivers Act, EO 12898 Environmental Justice, Farmland Protection Policy Act, RCRA, CWA, CAA, CBRA



EHP Law & Executive Order Reviews



FEMA

OFFICE OF ENVIRONMENTAL PLANNING AND HISTORIC PRESERVATION
PARTNERS IN SHAPING RESILIENT COMMUNITIES

Challenges and Success with Grants

Challenges

- Time Lapse until FEMA environmental compliance review
 - Project Completed with Adverse Impacts to Resources prior to FEMA involvement
 - Permit not obtained prior to construction
 - Jeopardize Federal Funding
- Projects Formulated without environmental and historic resources considered
- Communication or other roadblocks in obtaining information for environmental review

Collaboration

- Community Knowledge of Laws, Regulations & Executive Orders
- Shared Decision-Making
- Community Involvement
- Tie to Planning Document

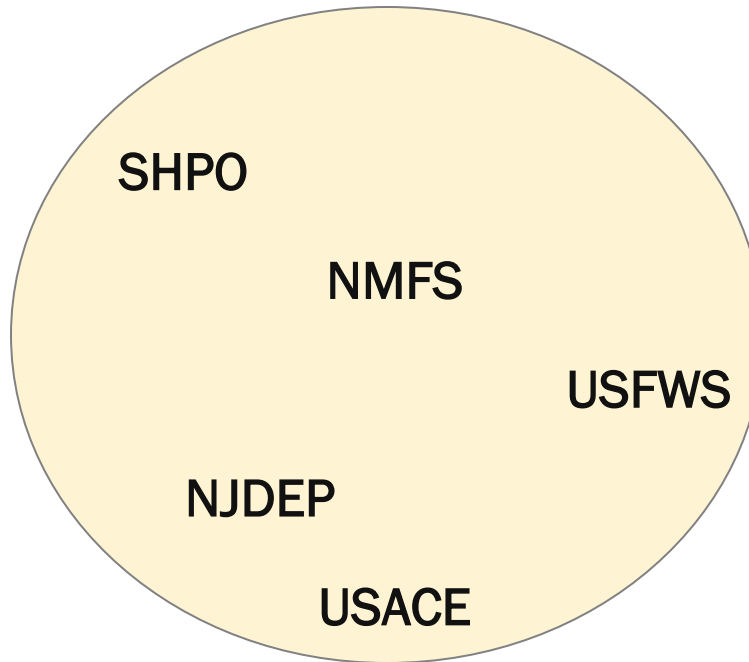


FEMA

OFFICE OF ENVIRONMENTAL PLANNING AND HISTORIC PRESERVATION
PARTNERS IN SHAPING RESILIENT COMMUNITIES

Resource & Regulatory Agency Partners

Streamlined Review Processes & Open Communications
Training & Tools



Pinelands, Highlands, Historical Societies, and Other

Grantee Partnership with NJOEM



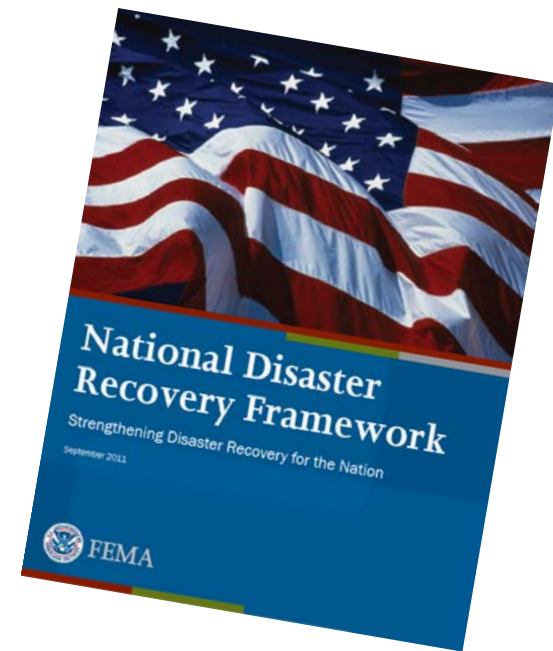
FEMA

OFFICE OF ENVIRONMENTAL PLANNING AND HISTORIC PRESERVATION
PARTNERS IN SHAPING RESILIENT COMMUNITIES

National Disaster Recovery Framework

Environmental Commissioner Partnership Welcomed

- <http://www.fema.gov/recoveryframework/>



FEMA

OFFICE OF ENVIRONMENTAL PLANNING AND HISTORIC PRESERVATION
PARTNERS IN SHAPING RESILIENT COMMUNITIES



Engagement

- Mitigation & Other Planning
- Community Rating System & Floodplain Management
- Help Communities Formulate Smart Projects
 - Special Considerations Questionnaire, Grant Applications, Screening Forms.
- Communication
 - Meetings, Site Visits
- Training
- Review
- Permits

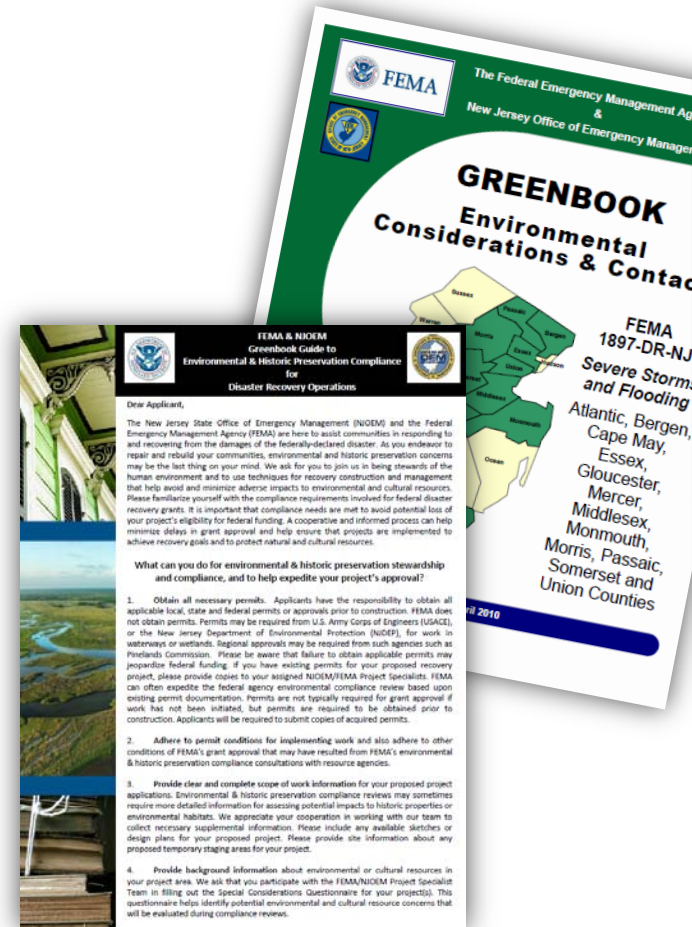


FEMA

OFFICE OF ENVIRONMENTAL PLANNING AND HISTORIC PRESERVATION
PARTNERS IN SHAPING RESILIENT COMMUNITIES

Greenbook – Outreach Document for Disaster Recovery

- Outreach for Early Integration of Environmental Considerations
- Guide for Recovery Patners
- <http://www.fema.gov/library/viewRecord.do?id=4851>
- FEMA R2 welcomes supplemental information – send content or edits to Megan Jadrosich



FEMA

OFFICE OF ENVIRONMENTAL PLANNING AND HISTORIC PRESERVATION
PARTNERS IN SHAPING RESILIENT COMMUNITIES

Planning

- National Response Framework
- National Contingency Plan
- Debris Operations Planning
- Hazard Mitigation Planning
- Threat Hazard Identification & Risk Assessments (THIRA)
- Regional Catastrophic Planning Grants

<http://www.regionalcatplanning.org/>



**COORDINATION
COMMUNICATION
UNITY OF EFFORT**



FEMA

OFFICE OF ENVIRONMENTAL PLANNING AND HISTORIC PRESERVATION
PARTNERS IN SHAPING RESILIENT COMMUNITIES

Resilient Project Outcomes:

- Plans consider resources from the beginning
- Repairs, Replacements & Relocations built in compliance
 - Faster reviews & Community Recovery
- Protect and Preserve existing cultural and environmental resources.
- Construction Best Management Practices
- Build smart - Relocate structures outside of floodplains and minimize risk to structures/population.
- Incorporate Green Building Technologies– LEED
- Restoration of habitats – native plant material
- Win-win stormwater management projects
- Living shorelines
- Prepare your community and yourselves



FEMA

OFFICE OF ENVIRONMENTAL PLANNING AND HISTORIC PRESERVATION
PARTNERS IN SHAPING RESILIENT COMMUNITIES



Thanks for your time,

Megan Jadrosich, PMP, CFM
Regional Environmental Officer
FEMA Region 2
Megan.Jadrosich@fema.dhs.gov
212.680.3635



*It is Easy
To Be
Green*



FEMA | OFFICE OF ENVIRONMENTAL PLANNING AND HISTORIC PRESERVATION
PARTNERS IN SHAPING RESILIENT COMMUNITIES