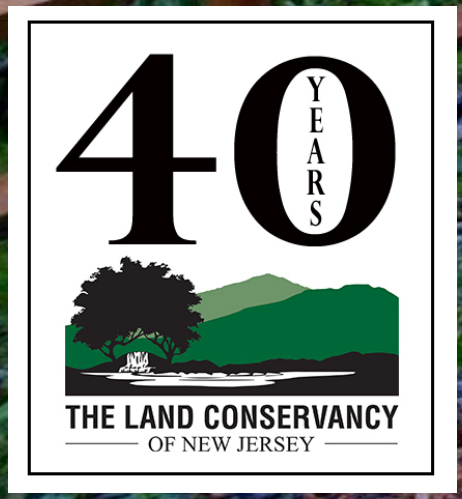


# Open Space and Recreation Planning



# Green Acres Planning Incentive Program



*New Jersey Department of Environmental Protection*


<https://www.nj.gov/dep/greenacres>

# A Guide to Open Space and Recreation Plans



**TOWNSHIP OF LAFAYETTE**  
OPEN SPACE AND RECREATION PLAN UPDATE  
COUNTY OF SUSSEX

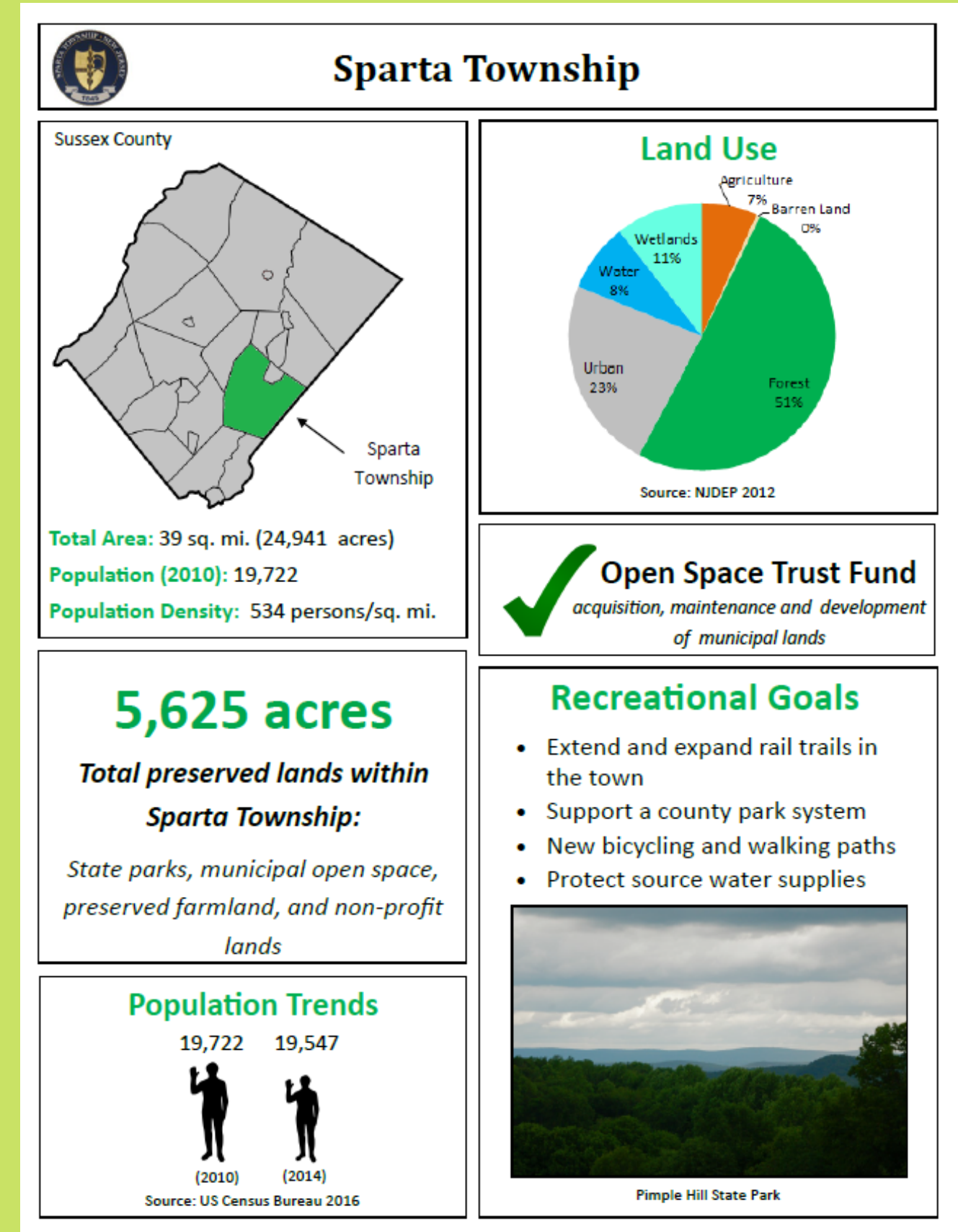
A photograph of a wooden gate leading into a lush green forest. The gate is made of dark wood and has a sign on it. The path leads into a dense forest with tall trees and vibrant green foliage. Sunlight filters through the leaves, creating dappled shadows on the grass.

 **July 20, 2020** **Township of Lafayette**

# 01

## Executive Summary

Summary of the community's profile, primary ecological amenities, and past actions to preserve cultural, historic, open space, and recreation resources.





# 02



An outline of a community's open space committee/commission and their goals.



## Goals of the Open Space Program

# TOWNSHIP OF LIVINGSTON

## OPEN SPACE AND RECREATION PLAN UPDATE

- Protect and enhance the quality of life for Township residents through preservation of “green corridors” and conservation of land and water.
- Protect the beauty and physical appearance of the community, continuing the effort to create a “green landscape” of tree-lined streets and the creation of walking paths.
- Implement the recommendations contained within the *2007 Trails and Greenway Plan* to create a system of multi-use trails connecting suburban residential neighborhoods with park and recreational areas.
- Create scenic greenways and linked corridors of protected park lands in the community.
- Consider Township open space and recreation within a regional context and coordinate Township efforts with neighboring municipalities, state, and county agencies.
- Encourage private associations who implement cluster design principles to retain open space to provide for recreational activities and to sponsor public access for trails and connectivity design.



# 03

## Community Meetings

---

A description of the public meetings that address the establishment or update to the open space and recreation plan & its outcomes.

# 04

## History of the Open Space Program

---

- Municipal Open Space Trust Fund (OSTF)
- Open Space and Recreation Grants Received by the town
- Bond Financing

# 05

## Open Space Inventory

---

A record of preserved, public, and private land in a community & their potential for open space.



# Open Space Program History

## Preserved & Public Lands

## Greenways & Trail Recommendations

## Plan Schedule



**Open Space and Recreation Plan Update 2017: Public Meeting**  
Thursday, March 30, 2017 – 6:00 pm

Hosted by:  
Edison Township Open Space Committee and Township Administration

Welcome  
Robert Diehl, Council Liaison to Open Space Committee

Program Accomplishments  
Walter Stochel, Chair, Open Space Committee

Forum on Open Space and Recreation Plan Update

# Meeting Agendas & Public Participation

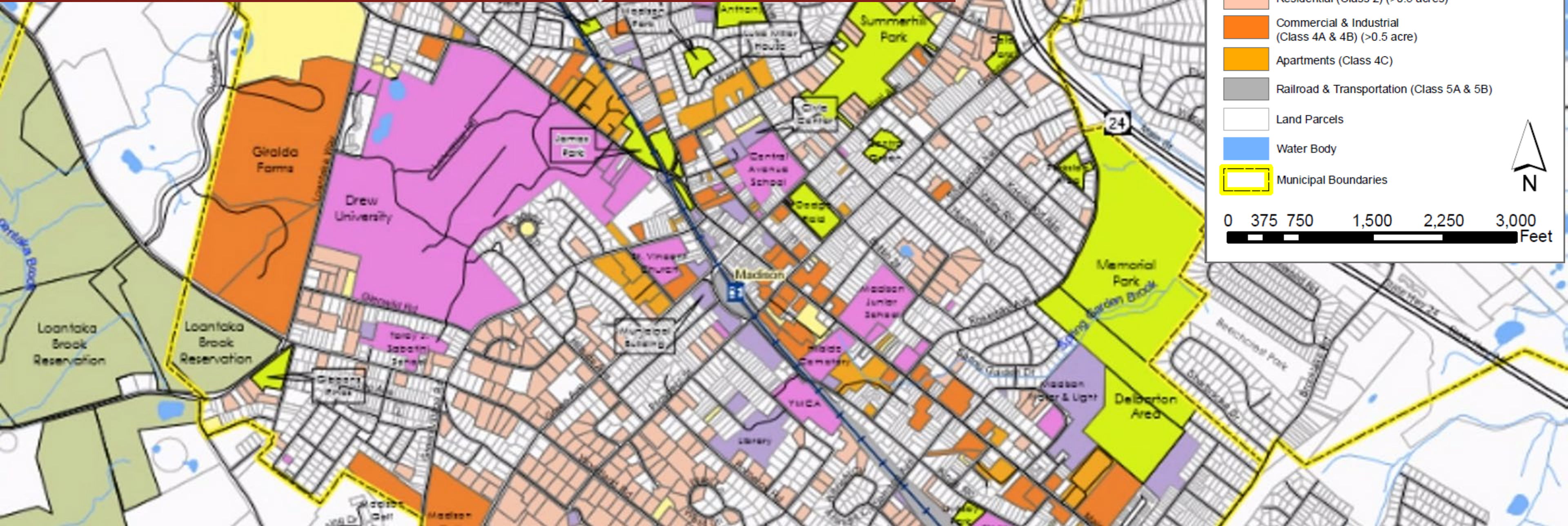




# Map 1: Open Space

## Madison Borough, Morris County

# BOROUGH OF MADISON, NEW JERSEY



- County Parks & Open Space
- Municipal Open Space
- Conservation Easement
- Public Properties (Class 15C)
- Educational Properties (Class 15A & 15B)
- Churches & Charitable Properties (Class 15D)
- Cemeteries (Class 15E)
- Exempt Properties (Class 15F)
- Vacant (Class 1)
- Residential (Class 2) (>0.5 acres)
- Commercial & Industrial (Class 4A & 4B) (>0.5 acre)
- Apartments (Class 4C)
- Railroad & Transportation (Class 5A & 5B)
- Land Parcels
- Water Body
- Municipal Boundaries

0 375 750 1,500 2,250 3,000 Feet



06

# Historic and Cultural Resources

An inventory of local, state, and federally significant historic and cultural resources within the municipality or county.



# Old Stone House

## Registered Historic Sites

The historical sites of Washington Township identified by the NJDEP Historic Preservation Office (State Historic Preservation Office or SHPO) are identified in **Table 10**. Several other sites in the Township are of special historic interest and may be eligible for inclusion on the National or State Register but have yet to receive an opinion from the SHPO.

**Table 10. Washington Township SHPO Sites**

Site Name	Address	SHPO Opinion
Archaeological Site 28-GI-125		9/14/1982 (ID#1398)
Charcoal Kiln Site (28-GI-279)		7/17/1995 (ID#2849)
Davis Farm Prehistoric Site (28-GI-133)	Greentree Road	1/10/1985 (ID#3170)
George Morgan Stone House	Egg Harbor Road	6/20/1979 (ID#1418)
Hurff House and Outbuildings	Berlin Road and County Route 555	12/17/1981 (ID#1417)



# 07

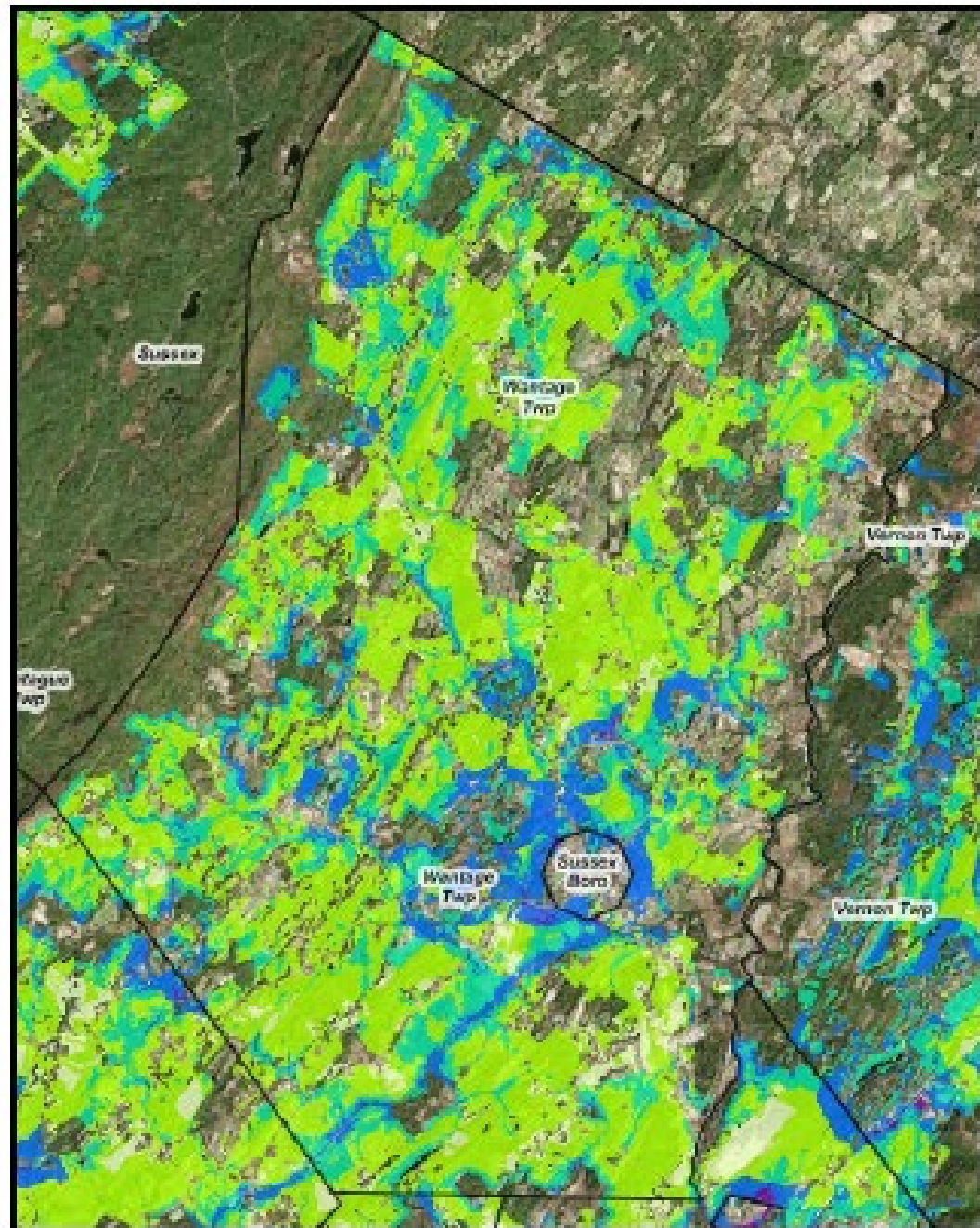
## Planning Consistency

A compilation of municipal, county, and state plans relevant to the Open Space and Recreation Plan.



# CONSERVATION BLUEPRINT

## Community Green Space



Community green space priorities are lands that are important to protect for the health of people, such as natural and agricultural lands in close proximity to homes and undeveloped lands in floodplains. Wantage Township has a mixture of high, medium, and low priority land for community green space.

-  High Priority
-  Medium Priority
-  Priority
-  Important





08

# Recreation Resources



09

# Preservation Recommendations

A System of Open Space

Community Benefits of Open  
Space Preservation

Greenways



# SUSSEX COUNTY NEW JERSEY



## VII. RECOMMENDATIONS

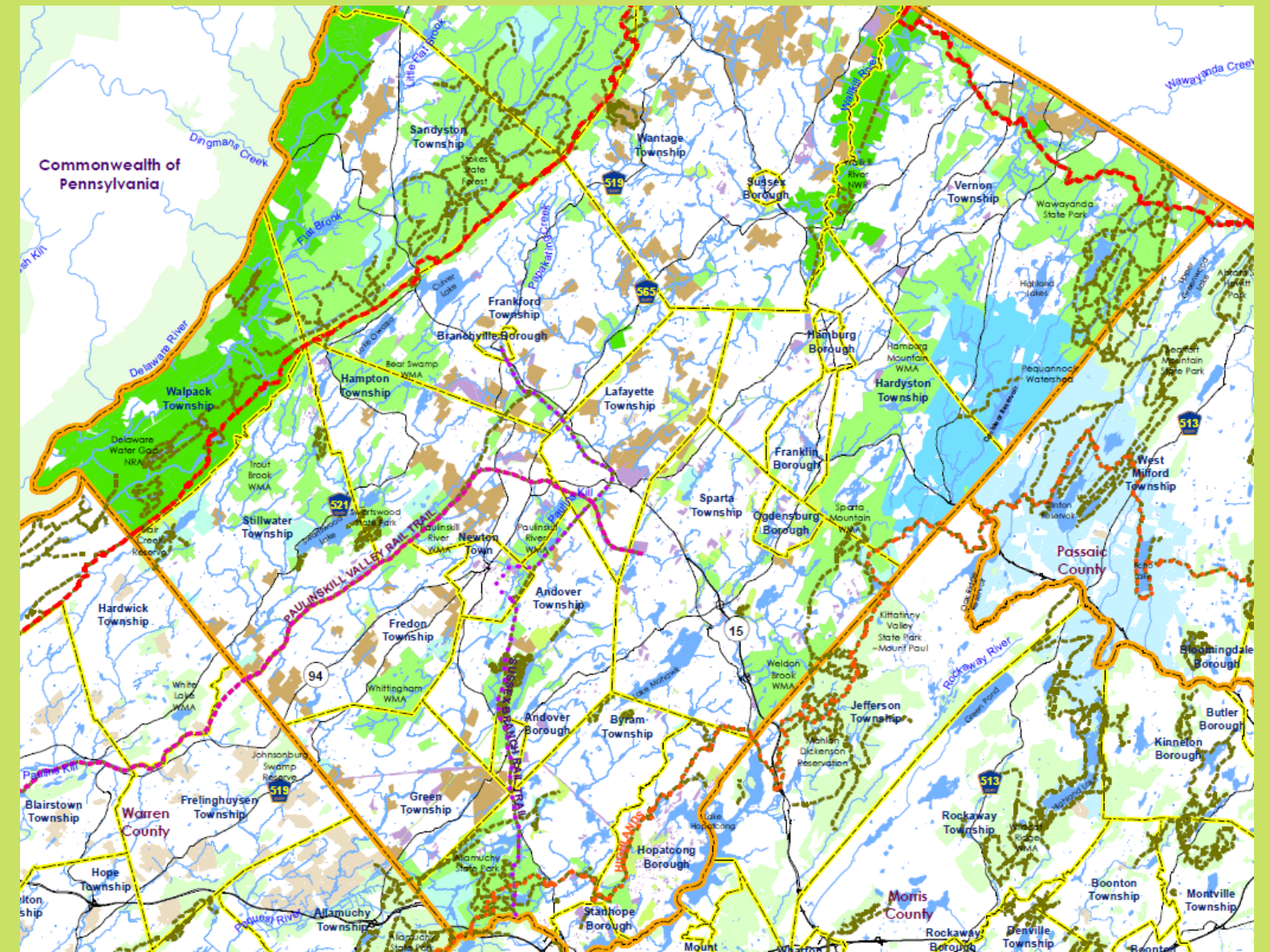
Sussex County is abundant with preserved land and yet, as illustrated in the water resource and stewardship chapters and in the trails wish list gathered from Sussex County municipalities (*Appendix B*) there are many opportunities to preserve, conserve, enhance and steward new and existing lands. A goal of this plan has been to build helpful tools for municipalities and agencies to take a County-wide landscape thousands of acres in size and find a way to identify and focus in on acquisition and stewardship opportunities from a framework that promotes the best outcome for the County's natural resources and its people. A second goal is to expand and enhance opportunities for residents and visitors to explore and enjoy, with a particular focus on connectivity and trails.

### A. Overarching Recommendations

It is helpful to be aware of planning efforts by other non-Sussex County agencies, such as the National Park Service, the Appalachian Trail Conservancy, the Open Space Institute and other conservation organizations with regional focus. Building relationships that help Sussex County and its municipalities be heard, both in regard to conservation, stewardship, recreation and in regard to economic sustainability and viability will further the County's open space and recreational goals.

Below are summaries of some recent publications and initiatives that touch on these areas. In addition, municipalities have expressed interest in promoting Sussex County's resources as a way to build its economy through tourism. The Sussex County Chamber of Commerce has a robust program including web and print resources. There are three additional organizations with plans and programs that can help this effort including the Appalachian Trail Conservancy, National Geographic and the National Park Service.

## Preserved, Public Lands, & Trails





# Benefits of Open Space

- Contributes to quality of life
- Fosters a sense of community
- Prevents vandalism and minor crimes such as littering
- Reduces the cost of basic needs
- Improves air and water quality
- Reduces municipal service and infrastructure improvement costs
- Enhances the values of homeowner properties
- Avoids the need of medical care
- Generates and sustains jobs
- Attracts consumers
- Increases participation in low-cost outdoor recreational activities
- Saves each household a significant amount of money on recreational opportunities
- Encourages physical activity
- Increases access points to trails & open space

\$16.3 billion added to the value of south-eastern Pennsylvania's housing stock

\$795 million in annually avoided medical costs

\$133 million in costs avoided as a result of the natural provision of environmental services

6,900 jobs created on or as a result of protected open space in the five-county region

\$240 million in annual property and transfer tax revenue for local governments



What is a

# GREENWAY



"An updated set of strategies and a timetable to implement the goals and recommendations"



Bee Meadow Park



10

## Action Plan

Within 1 Year, 3 Years, & Ongoing

## ACTION PROGRAM FOR VERNON TOWNSHIP



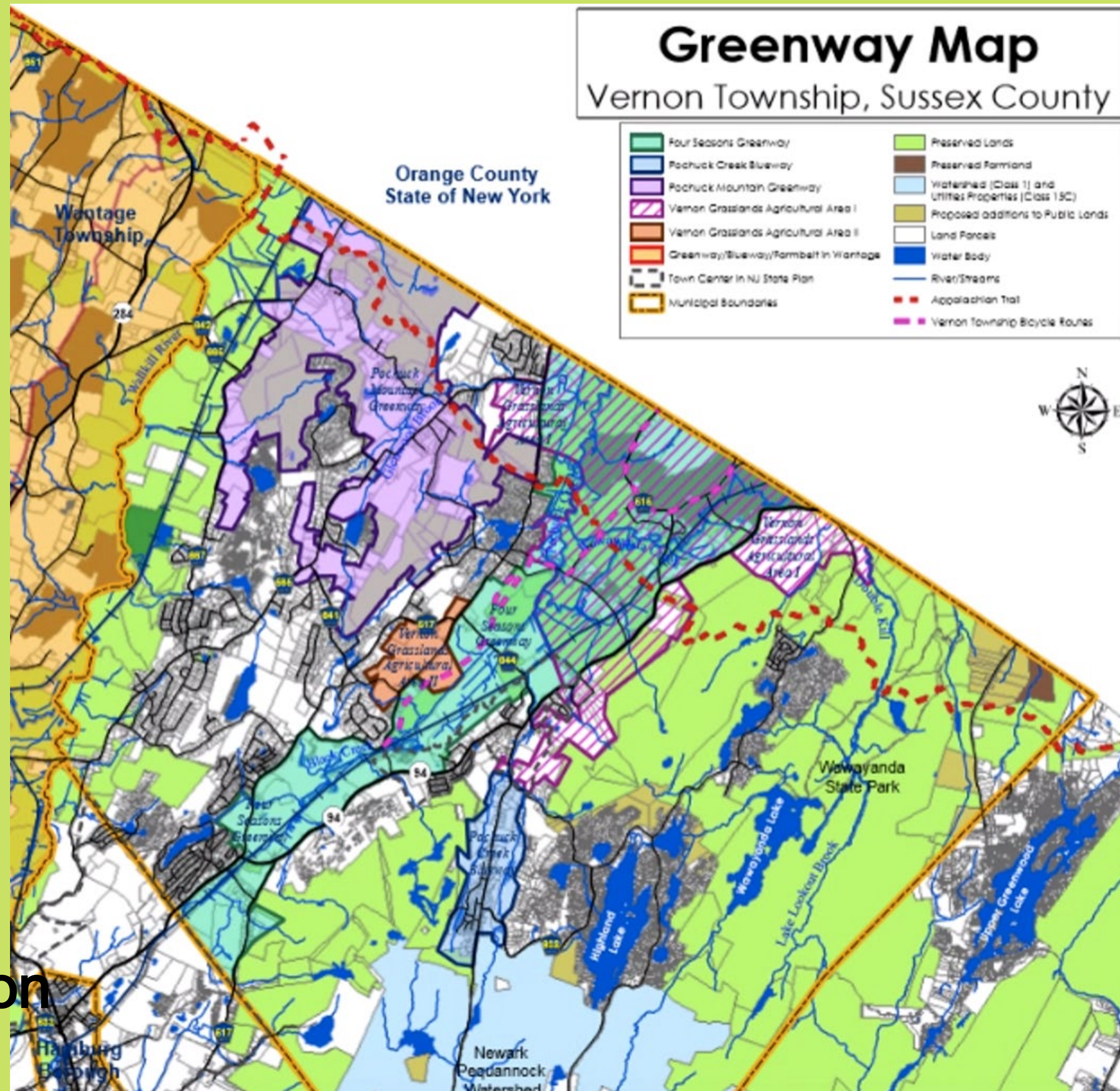
*"If one link in nature's chain might be lost, another might be lost,  
until the whole of things will vanish piecemeal."  
– Thomas Jefferson*

The *Action Program* provides a general timetable to help guide Vernon Township in meeting its open space goals. It suggests specific actions the Township can take in order to implement the vision set forth in this *Open Space and Recreation Plan Update*. The activities listed for the first year after completion of the Plan are the most urgent and will deepen the foundation of Vernon's open space program. "Three year" recommendations will take more time and planning to complete. "Five year" projects can be pursued once the more pressing needs have been addressed. "Ongoing" projects need attention at regular intervals, usually annually. The *Open Space and Recreation Plan Update* is not a static document. The *Action Program* should be updated every year, and progress should be reported to the governing body.

### *Within One Year*

- Adopt the updated *Open Space and Recreation Plan Update* as an element of the *Master Plan*
- Submit the final *Open Space and Recreation Plan Update* to Green Acres Planning to update the Township's Planning Incentive Grant application
- Assess open tracts of land within the Township to determine how particular parcels meet the goals and objectives for acquisition whether by fee or easement
- Determine whether other municipally owned properties may be suitable for preservation and add them to the municipal ROSI
- Begin outreach to landowners of properties adjoining public lands to determine level of interest in selling

# Goals & Suggested Implementation Measures



# Thank You!

Barbara Heskins Davis, PP, AICP

bhdavis@tlc-nj.org

(973) 541-1010 ex. 33



@tlcnj



@tlcnj



@tlcnewjersey



facebook.com/tlcnj

40  
YEARS



THE LAND CONSERVANCY  
OF NEW JERSEY