

JERSEY CITY CLIMATE AND ENERGY ACTION PLAN



WHY CREATE A CLIMATE AND ENERGY ACTION PLAN?

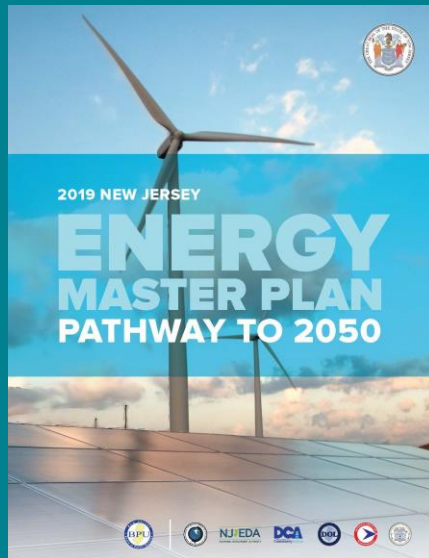


- Detailed and strategic framework for meeting City Climate and related sustainability goals
- Involves community in identifying and implementing strategies
- Gets everyone on the same page – incl. other departments and agencies
- Ensures strategies will live on in future administrations



Jersey City's CEAP aligns with NJ State efforts:

- *NJ Energy Master Plan (2019)*
- *NJ's Global Warming Response Act 80x50 Report (2020)*



How'd we get here?



2015 – Resolution to reduce emissions by 80% by 2050

2017 – Mayor Fulop joins Climate Mayors after U.S. drops out of Paris Climate Agreement

2018 – Commitment to the Global Covenant of Mayors for Climate & Energy

2019 – first-ever community-wide greenhouse gas emissions (GHG) inventory

City of Jersey City

2016 Inventory of Communitywide Greenhouse Gas Emissions

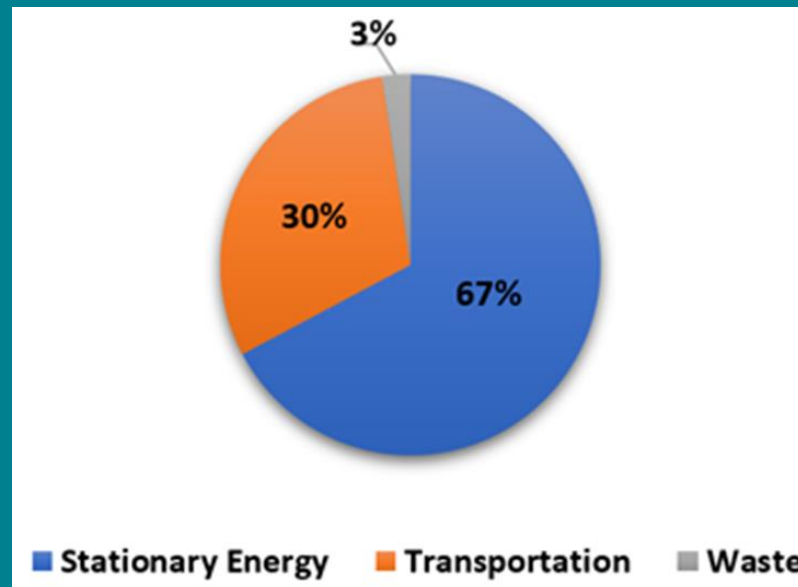


Produced by the Jersey City Office of Sustainability
August 2019

With the assistance of Montclair State University's PSEG Institute for Sustainability Studies and ICLEI - Local Governments for Sustainability USA

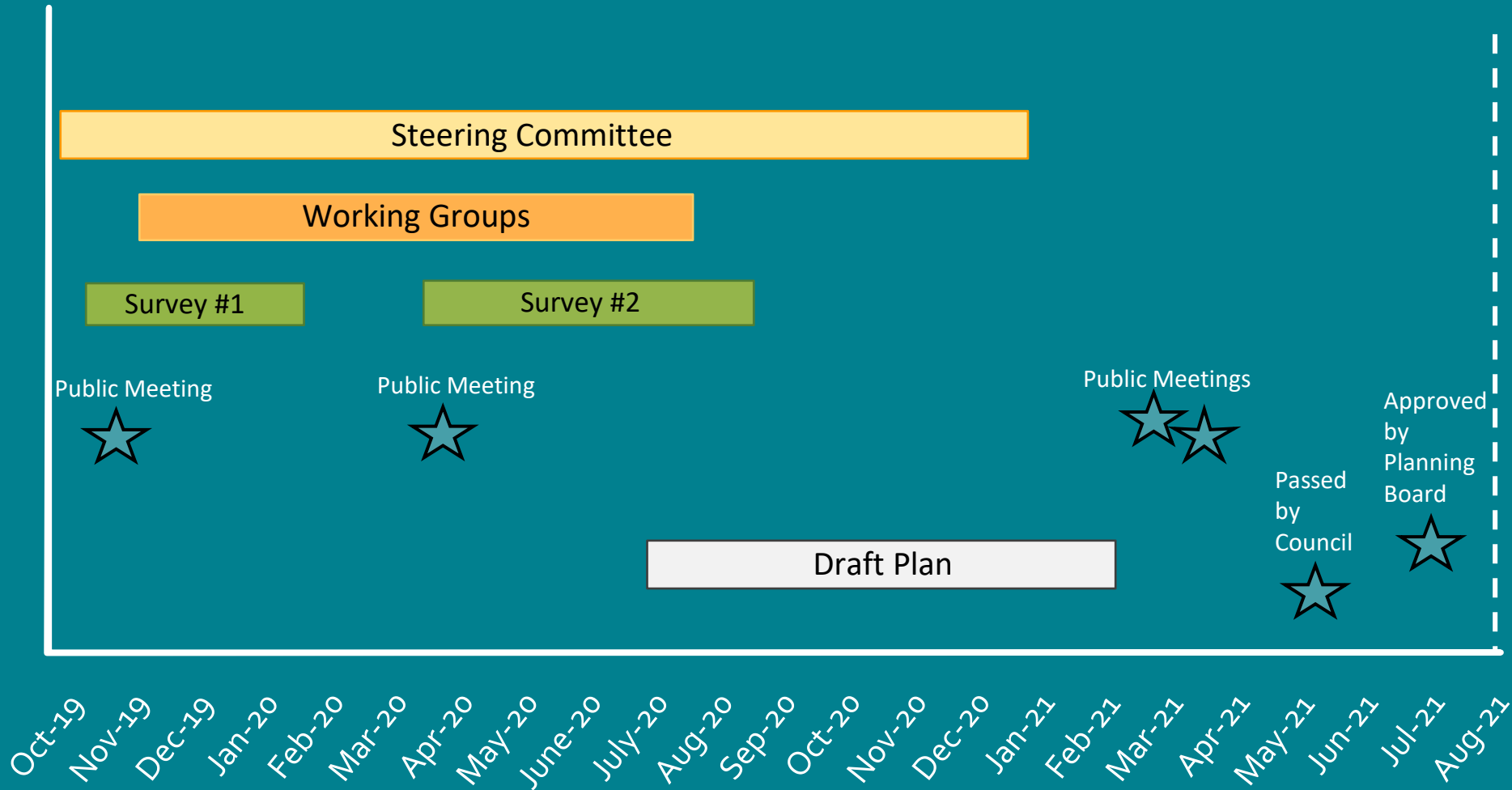
Jersey City's total community-wide GHG emissions = 2,897,275 Mt CO₂e

(Metric tons of CO₂ equivalent)



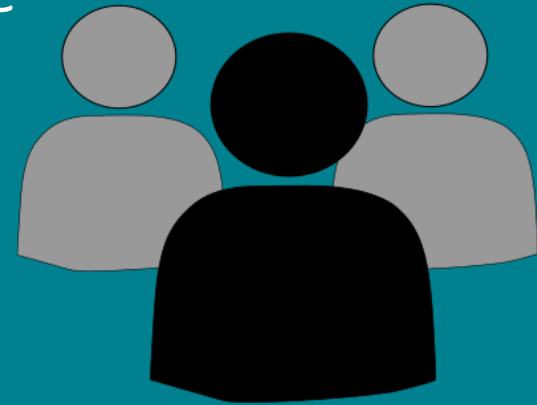
Jersey City Total 2016 GHG Emissions by Sector

CEAP Timeline



Steering Committee

- Made up of 15+ representatives from local, regional, and state agencies
- General steering of process
- Assistance with outreach
- Review of documents



Four Working Groups



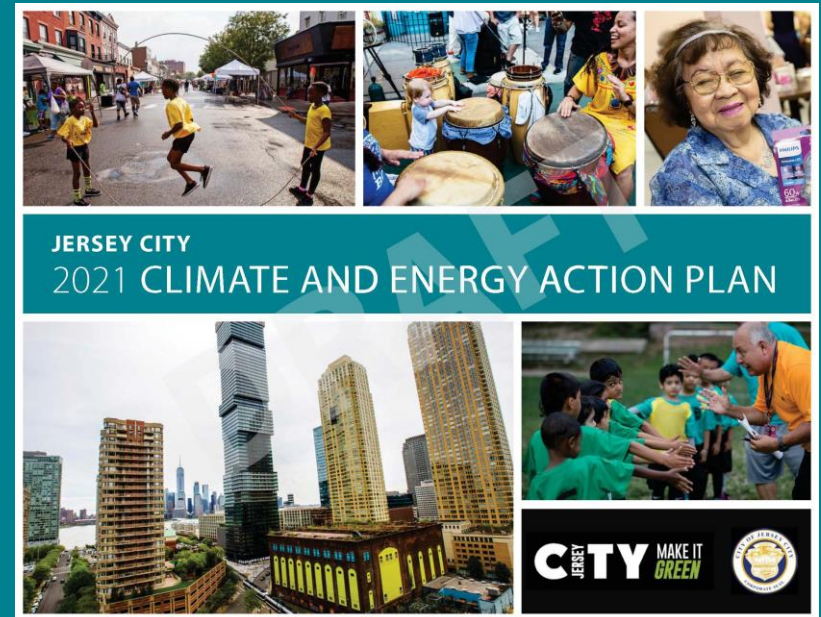
- 15-member working groups for each major focus area:
 1. Energy
 2. Transportation & Land Use
 3. Waste
 4. Equity & Outreach
- Reviewed national examples and New Jersey Energy Master Plan
- Established draft goals for each GHG emissions sector
- Recommended specific action items and priorities

JERSEY CITY'S DRAFT CLIMATE AND ENERGY ACTION PLAN



Goals of the CEAP:

- Reduce greenhouse gas emissions **80 percent** below a 2016 baseline by the year 2050
- Adapt to climate change and build community resilience
- Ensure solutions are implemented equitably



There are 57 Action Items across the Energy, Waste, and Transportation & Land Use sectors to meet GHG reductions.

CLIMATE EQUITY OBJECTIVES

OBJECTIVE 1: Improve energy security and affordable access to clean energy while minimizing displacement

OBJECTIVE 2: Increase access to active transportation, such as walking and bicycling, and public transit options that are affordable, low or zero-emission

OBJECTIVE 3: Expand and improve access to parks and public green spaces

OBJECTIVE 4: Reduce the risks and impacts of air pollution, flooding, and extreme heat



WASTE SECTOR

- 15 Actions



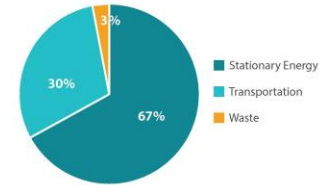
The Action Items
WASTE

WASTE ACTIONS



While waste only accounts for 3% of emissions from the 2016 inventory, efforts to reduce waste are important for multiple environmental, health and economic benefits. In addition, recycling, reuse and waste prevention offer opportunities to reduce upstream emissions from the production of goods and food, having an impact larger than the direct waste emissions would imply. Jersey City has the opportunity to start building a circular economy, creating jobs in industries such as composting, repair and reuse to close the loop.

The GHG inventory only includes waste emissions that occur directly at the landfill. The emissions from producing the raw materials and products that ultimately end up in the landfill are larger, but harder to quantify. Efforts to extend the life of products, reduce unnecessary packaging and increase recycling can have emissions benefits larger than would be suggested by the waste portion of the Jersey City GHG inventory. Because these emissions benefits are likely a long distance away where materials are extracted or manufacturing occurs, they are not directly reflected in the community GHG inventory.



| Co-benefits | Public health | Economic sustainability | Equity | Resilience |
|---------------------|---------------|-------------------------|--------|------------|
| Emissions reduction | Low | Medium | High | Very high |

| Number | Description | Timeframe | Priority | Emissions Reduction | Co-Benefits |
|--------------------|--|-----------|----------|---------------------|--|
| Objective 1 | Adopt a holistic waste management strategy to reduce greenhouse gas emissions from waste produced by municipal operations and the community. | | | | |
| W-1 | Develop a Zero Waste Plan that establishes citywide aggressive waste reduction targets and strategies for achieving them. | 1-3 years | High | Facilitative | Public health, Economic sustainability |
| W-2 | Expand and improve waste reduction education programs for residents, businesses, schools and institutions. Include education about food waste prevention and donation. | 1-3 years | Medium | Low | Economic sustainability, Equity |

Jersey City Climate Action Plan | 86



WASTE SECTOR

High Priority Actions

1. Develop city-wide Zero Waste Plan
2. Facilitate reuse
3. Increase recycling education
4. Expand residential composting
5. Composting of Business food waste

JERSEY CITY'S RESIDENTIAL COMPOSTING PROGRAMS



Programs managed by the Division of Recycling

The following programs are managed by the Division of Recycling in partnership with Community Compost Company:

- Drop-Off Composting Program
- Backyard Composting Program
- **NEW** Mobile Compost Pilot: Pick Up Collection By Bike

As of October 2021, Jersey City residents have diverted **227,953 lbs.** from the waste stream.

**Not including the Bike Collection Pilot*

Drop-Off Composting Program

- Jersey City launched its first-ever composting efforts in 2018 with a Residential Compost Drop-Off Program.
- As of October 2021, there are 11 drop-off locations within the city. Sheds are accessible daily.
- Residents have diverted 210,981 pounds of organics.



Canco Park Drop-Off Site

Backyard Composting Program

- For residents interested in composting in their own backyards, the City offers discounted compost bins and free workshops.
- Approximate number of participants: 681
- Residents have diverted about 16,972 pounds of organics.



Backyard Bin

Mobile Compost Pilot: Pick Up Collection By Bike

- The e-bike collection program launched in September 2021.
- Number of participating households: 61 households
- Participants put out compost once a week on their assigned day.



Photo Credit: Jennifer Brown

NEXT STEPS



- Expand residential composting opportunities for food and yard waste.
- Expand the NJ Food Waste Mandate to encompass smaller institutions and businesses.

Jersey City Office of Sustainability

Carolina Ramos, Sustainability Coordinator

cramos@jcnj.org

201-547-4632

Jersey City Division of Recycling

Sonia Dublin, Director of Recycling

dublins@jcnj.org

201-547-4745

Website: jcmakeitgreen.org

Climate Action Page: JCMMAKEITGREEN.ORG/CLIMATE-ACTION