

REST EASY WHEN IT RAINS

STORMWATER UTILITIES FOR LOCAL LEADERS

March 2023 | ANJEC's Fundamentals for Effective Environmental Commissions



NEW JERSEY
**STORMWATER
UTILITY**
RESOURCE CENTER

Agenda

- Stormwater: What's The Fuss?
- Current Stormwater Funding Practices
- Intro to Stormwater Utilities (SWU) & Process
- Questions

What is Stormwater?

- Rain or melting snow that flows off of streets, lawns, or other sites (EPA)
- Why is stormwater runoff increasing?
 - Development & increased storm intensity and frequency.

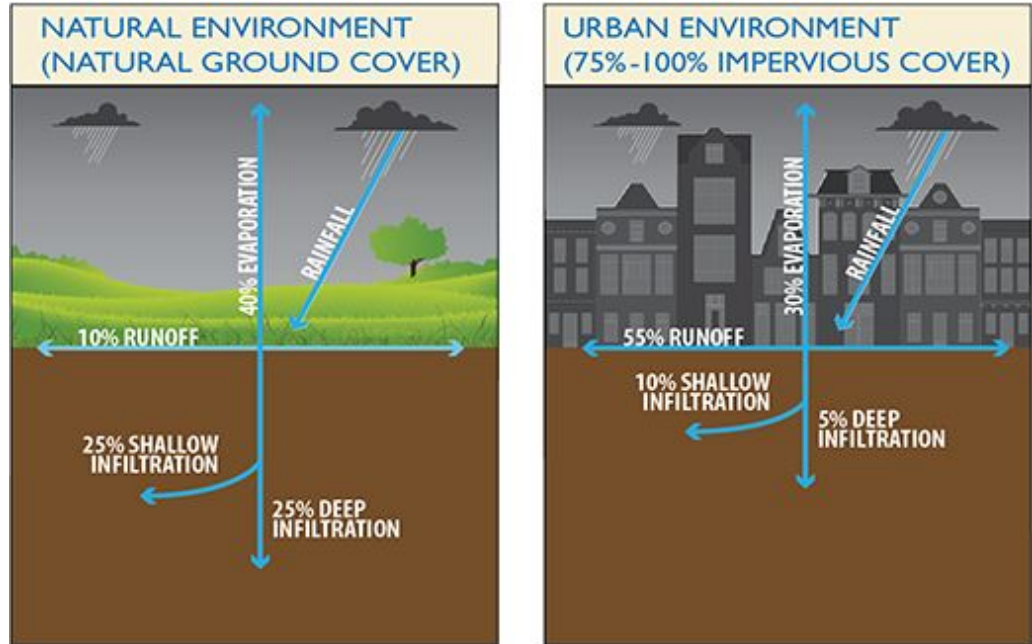


Image Credit: District of Columbia Water and Sewer Authority

Stormwater: What's the Fuss?

- Stormwater fouls our waters
- Stormwater floods our communities
- Stormwater hurts our economy



Camden, NJ



Current Stormwater Funding Practices

- **Property Taxes**



- **Sewer Fees**



Stormwater Management: What Are My Options?



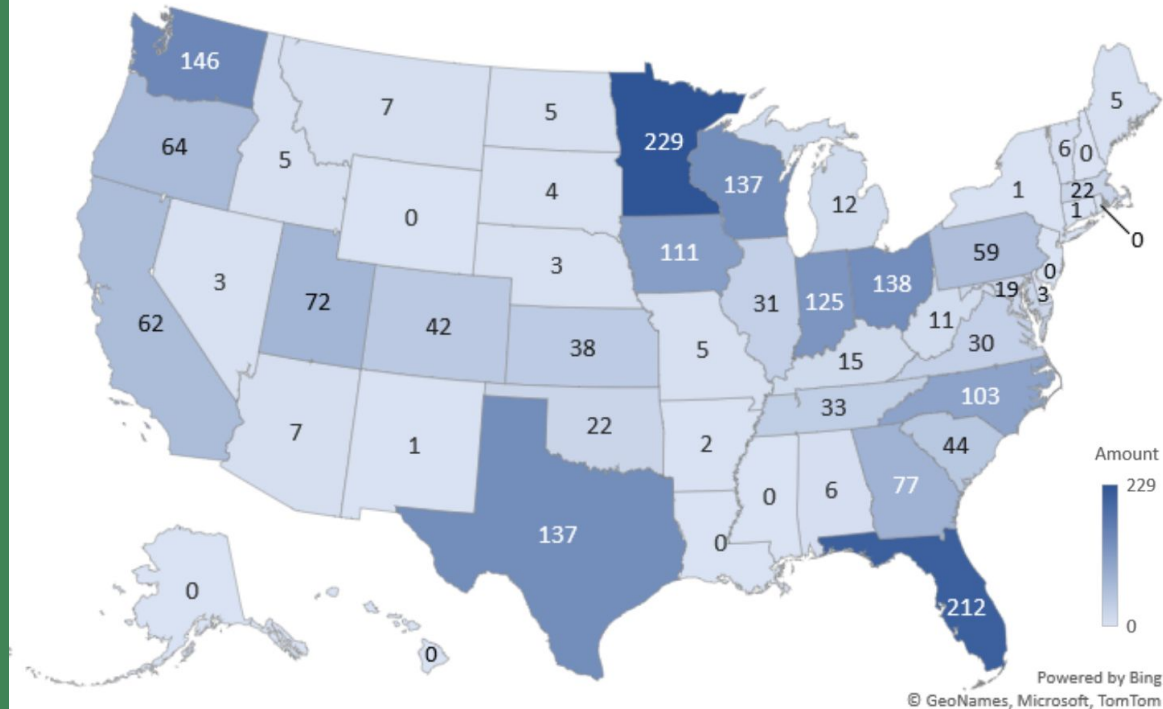
- **Do Nothing**
- **Increase Property Taxes**
- **Increase Sewer Rates**
- **Create a Stormwater Utility**

What is a Stormwater Utility?



Similar to a water or sewer utility, a stormwater utility is a dedicated funding mechanism to pay for a community's stormwater management program.

Number of Stormwater Utilities by State 2022



As of 2022, 2,055 stormwater utilities had formed in the United States.

(Source: Western Kentucky University 2022 Stormwater Utility Survey)

Clean Stormwater & Flood Reduction Act

- [New Jersey law](#) allows, but does not require, local governments to establish stormwater utilities.
- Stormwater utilities must collect fees based on the amount of stormwater a property generates.
- Can be established by municipalities, counties, groups of municipalities, and sewerage and improvement authorities.
- Funds generated are dedicated solely to stormwater management.



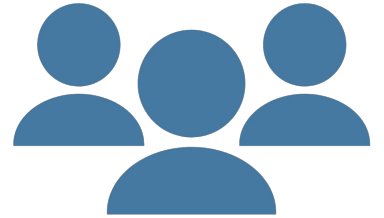
Stormwater Utility: Key Benefits



- Equitable
- Dedicated
- Stable
- Sole exemption - agriculture/horticulture

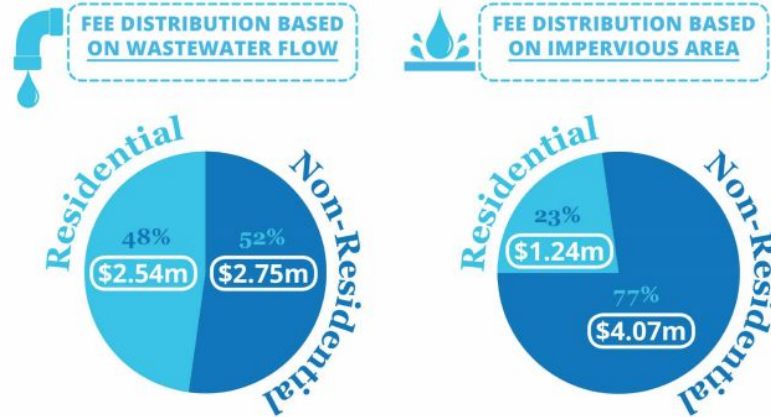
Stormwater Utility: What Can It Pay For?

- Establishment of a Stormwater Utility
- Capital Expenditures
- Operations & Maintenance
- Asset Management
- Public Outreach & Education



Paying a Fair Share in Harrisburg, PA

Fee Distribution



With a Stormwater Fee, Residential Customers pay \$1.3M less

**Source: Capital Region Water, 2020*

Stormwater Credits

- **Definition:** Stormwater credits are ongoing reductions in a customer's stormwater fee provided for private stormwater management activities that reduce demand on the stormwater system and/or reduce the utility's costs.
- Credit programs also provide a venue for stormwater utilities to promote green initiatives, sustainable development and environmental stewardship across their service area(s).
- NJDEP Guidance



Steps to Establish a Stormwater Utility

Key Milestones For Implementation



Eight Basic Steps to Establish a Stormwater Utility

1. Vetting the concept with top local officials
2. Establishing a core team of internal experts
3. Engaging the mayor (or county executive or utility director)
4. Authorizing a feasibility study to identify options that best suit the community
5. Ongoing stakeholder and outreach activities
6. "Go" or "no go" decision
7. An implementation phase
8. The final launch

Community Research: Important Questions to Answer

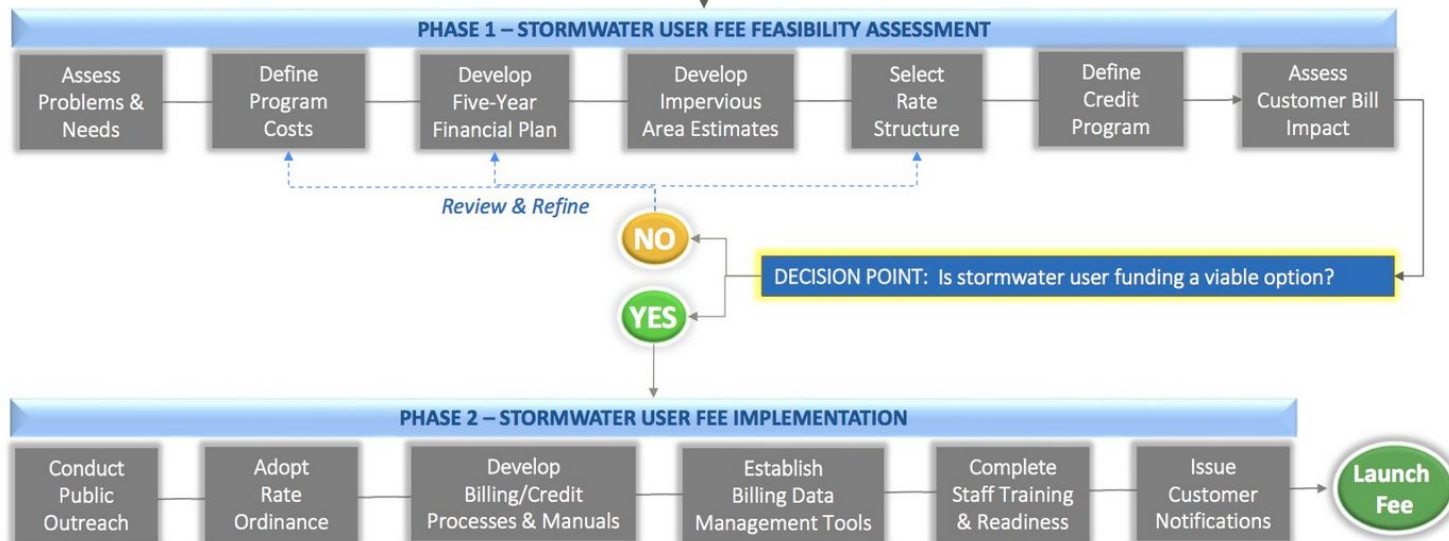
- What are the problems facing your community?
- What are your community's goals for managing stormwater?
- Do you need a different structure and more resources?
- What is the cost of inaction?



If you Have Any of These Compelling Stormwater Management Needs:

- (i) Enhance services and compliance?
- (ii) Solve problems in the Community?
- (iii) Establish dedicated funding?
- (iv) Enhance equity in recovering costs?

Here is a Two-Phased
Approach to Your
Potential Solution



SWU Investigations in New Jersey



- Municipal Perspective
 - Flooding Issues
 - Stormwater Infrastructure Needs
 - Water Quality Concerns



Protect Public Health.
Safeguard Your Community.
Rest Easier When It Rains.



Why Stormwater Matters

[Learn More >](#)



Why a Stormwater Utility?

[Learn More >](#)



Establish a Stormwater Utility

[Learn More >](#)

A person wearing an orange life vest is paddling a small wooden canoe on a calm body of water. In the background, a vibrant rainbow arches across a blue sky with scattered white clouds. The far shore is lined with green trees.

Additional Resources

- Consultant Technical Assistance
- Grant Application Assistance

Lindsey Sigmund
MGI Program Manager
New Jersey Future
lsigmund@njfuture.org



stormwaterutilities.njfuture.org