

stormwatersystems



***Public / Private  
Partnerships for  
Trash Trap  
Technologies***



# Products

- **Bandalong Bandit™**
- **Bandalong Litter Trap™ & Boom Systems**
- **StormX™ Netting Trash Trap**



# Bandalong Litter Trap™

- The Bandalong Litter Trap™ utilizes the natural energy of flowing water to capture and remove floating pollutants and debris from our waterways.
- Does not affect aquatic species movements.
- Will not cause flooding or impact channel hydraulic conditions or restrict flow.
- Costs can be shared with public/private partnerships.



- **Foundations, corporations, and government agencies.**
- **Municipalities or 501(c)(3) groups**
- **Requirements for funding vary with grantmakers**
- **ESG - Environmental issues, social issues, corporate governance**
- **Community partnerships**

**Custom sign demonstrates partnership between the Anacostia Riverkeeper and the DDOE (District Department of the Environment). The Anacostia Riverkeeper maintains 8 Bandalong Litter Traps™.**



# THIS STREAM FLOWS INTO THE ANACOSTIA RIVER

## THIS TRASH TRAP:

- CAPTURES LITTER
- PROTECTS WILDLIFE
- IMPROVES WATER QUALITY



\*\*\* DEPARTMENT  
OF ENERGY &  
ENVIRONMENT [doee.dc.gov](http://doee.dc.gov)

**Call 311 to Report Environmental Crimes**

Another Project Funded by the District's Disposable Bag Fee

WE ARE  
DISTRICT OF COLUMBIA  
DC GOVERNMENT OF THE  
DISTRICT OF COLUMBIA  
MURIEL BOWSER, MAYOR

**The Chattahoochee Riverkeeper partnered with an anonymous corporate sponsor who provided the funding to purchase the Bandalong Bandit™.**



**The Chattahoochee Riverkeeper partnered with an anonymous corporate sponsor, who provided the funding to purchase Bandalong Traps™**





stormwatersystems



**Piedmont Park  
Atlanta, Georgia  
Storm-X  
funded by NRPA  
(National  
Recreation and  
Park Association)**



**NEABSCO CREEK BANDALONG - 2023 LITTER TRAP CLEANOUT DATA** (by Tim Hughes, Prince William County's Environmental Mgmt Division of Public Works)

Litter Trap Cleanout Dates	3/1/23	4/3/23	4/27/23	5/1/23	5/21/23	6/4/23	6/30/23	7/13/23	8/3/23	8/13/23	9/18/23	9/21/23	9/27/23	10/18/23	11/15/23	11/22/23	December		
Trash Bags Collected (55 gallon)	6.0	2.0	8.0	8.0	3.0	0.5	4.0	3.0	6.0	5.0	10.0	5.0	6.0	1.0	0.5	21.0	TBD	89.0	Bags
Estimated weight (35 lbs per filled bag)	210.0	70.0	280.0	280.0	105.0	17.5	140.0	105.0	210.0	175.0	350.0	175.0	210.0	35.0	17.5	735.0	TBD	3,115.0	Lbs
<b>TYPE OF ITEMS COLLECTED (most to least)</b>																		Total Per Item	
Foam pieces (< 2.5 cm2) includes estimates of degraded foam package pieces and beads	543	109	690	215	150	65	389	165	660	548	1300	803	490	226	95	2500		8,948	
Plastic single-use bottles	302	56	362	537	79	22	129	158	437	300	847	317	545	40	24	1489		5,644	
Foam carryout & package pieces (> 2.5 cm2)	16	13	89	71	52	9	93	41	311	650	1850	404	230	38	21	1500		5,388	
Toys (balls, etc.)	31	1	17	24	8	3	28	19	50	22	51	65	10	13	3	44		389	
Beverage cans (aluminum)	21	4	12	13	24		11	7	51	7	14	3	3	3	1	7		181	
Foam food containers (fully intact)	6	1	32	11	1		15		3	25	56	11	6	7	2			176	
Plastic food containers (inc/ cups, plates, utensils)	6	1	17	8		2	17	4	26	7	3	8	7	8	4	24		142	
Cigarette butts																		141	
Food wrappers																		109	
Other plastic waste																		96	
Bottle caps (plastic, metal)																		74	
Glass beverage bottles																		65	
Other tobacco (e-cigarettes, lighters, etc.)																		62	
Other misc. waste																		58	
Beverage sachets/pouches																		55	
Plastic bags (retail carryout)																		51	
Plastic lids																		36	
Plastic straws & stirrers																		28	
Other bags (plastic)																		26	
Other plastic bottles (oil, bleach, etc.)																		24	
PPE (gloves, masks)	1		1		5		4		1	1			3					13	
Clothing, shoes			2															10	
Other foam mat's		4	1															10	
Other packaging (paper, cardboard)	1	3	2															7	
Paper food containers																		6	
Personal hygiene	1	1																4	
Tires	1															1		4	
Electronic waste (phones, batteries, etc.)																		4	
Strapping bands, lines, rope			1															3	
Fishing gear	3																	3	
Construction mat's	1		1															2	
Balloons																		0	
<b>Total Each Cleanout</b>	<b>985</b>	<b>201</b>	<b>1405</b>	<b>898</b>	<b>333</b>	<b>101</b>	<b>773</b>	<b>398</b>	<b>1745</b>	<b>1598</b>	<b>4181</b>	<b>4181</b>	<b>1707</b>	<b>382</b>	<b>162</b>	<b>5571</b>	<b>0</b>	<b>24,621</b>	<b>TOTAL 2023</b>



*Data Disclaimer: Data details vary from each cleanout. Some volunteers tabulate detail data using Ocean Conservancy's Clean Swell app and some haven't. Also, foam pieces < 2.5cm2 are estimates due to the large volume.*



**Micron Technologies purchased the Prince William County's Bandalong Litter Trap™ and paid for the installation, along with the first year's operating cost.**



**Prince William County Public Works provides staff that works with volunteers to clean out the Bandalong Litter Trap™.**



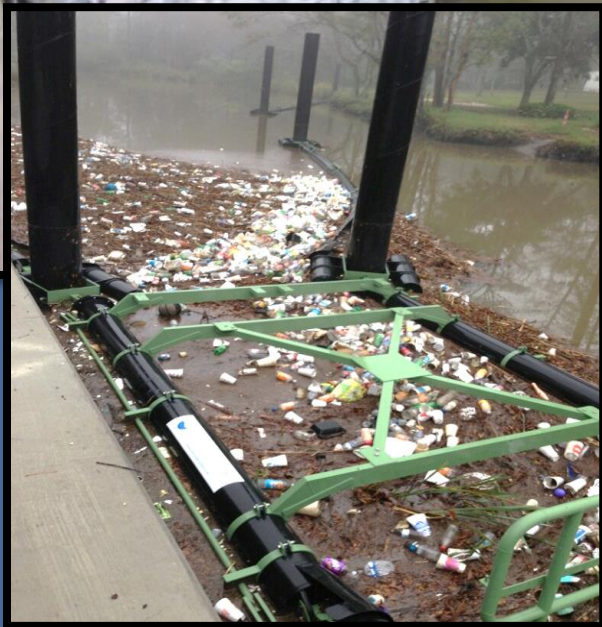
# Installation: Key Considerations

- Identify unique flow characteristics of the site
- Placement to provide access to clean out the trap
- Define best points of anchorage and anchorage methods (6 points of anchorage)
  - Bank
  - Rider poles
  - River bed



# Paynes Prairie State Park - Gainesville, Florida





**Eslava Creek - Mobile, AL**

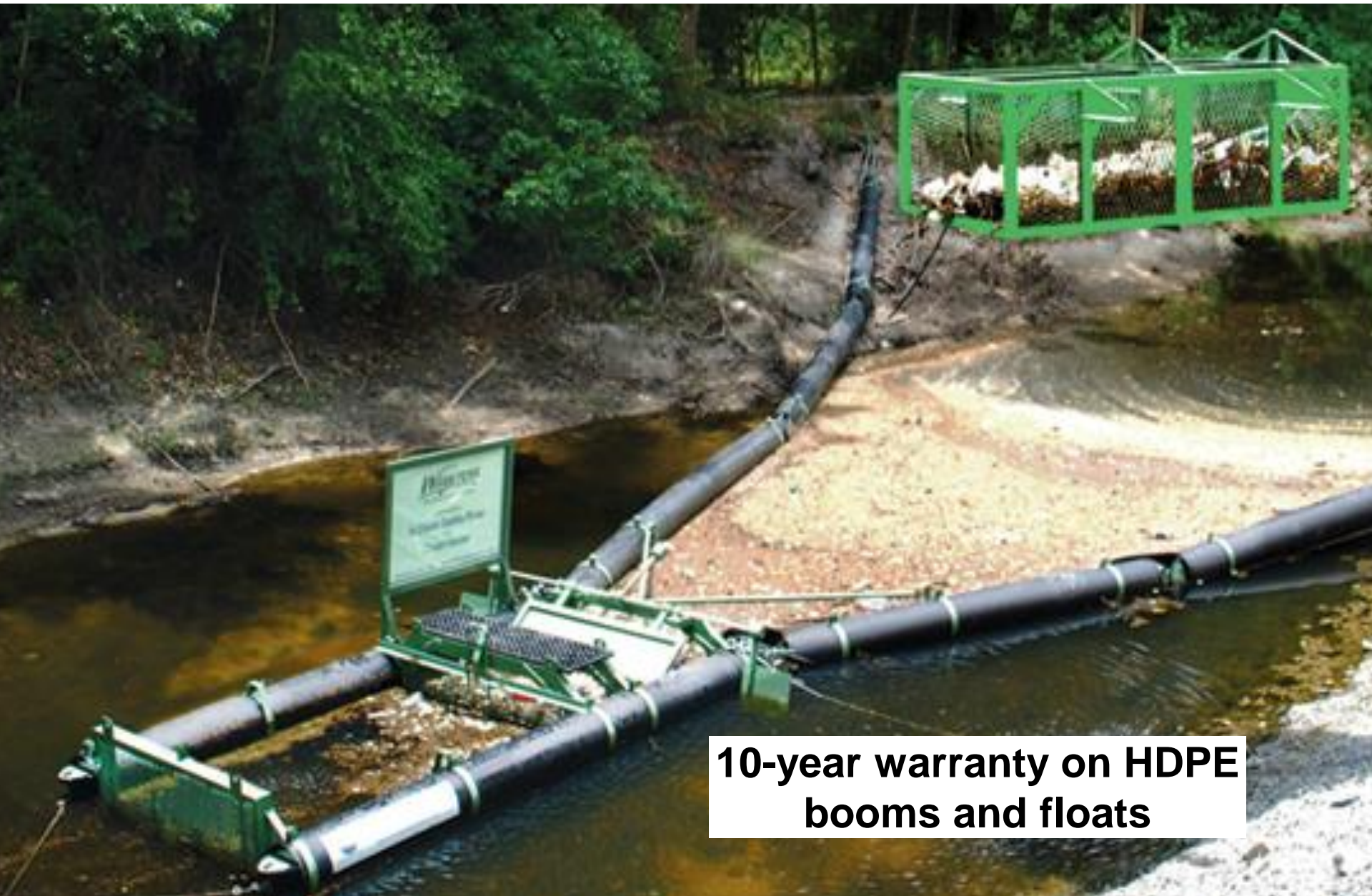
**Keeping Floating Litter and Heavy  
Organics Loads From Reaching Mobile  
Bay and Gulf of Mexico**





Lafayette, LA

**Can be cleaned with convenient lift-out basket, vacuum truck or manually.**



**10-year warranty on HDPE booms and floats**



# StormX

- StormX can handle the power of stormwater runoff and is the perfect tool for capturing both floatables and non-floatables.
- Netting available in reusable HDPE or polyester materials.



Highly effective for  
“first flush”

Captures gross pollutants  
as small as 5 mm and  
assists in sediment  
fallout and collection



**Overflows designed in hubs and weirs to prevent flooding**

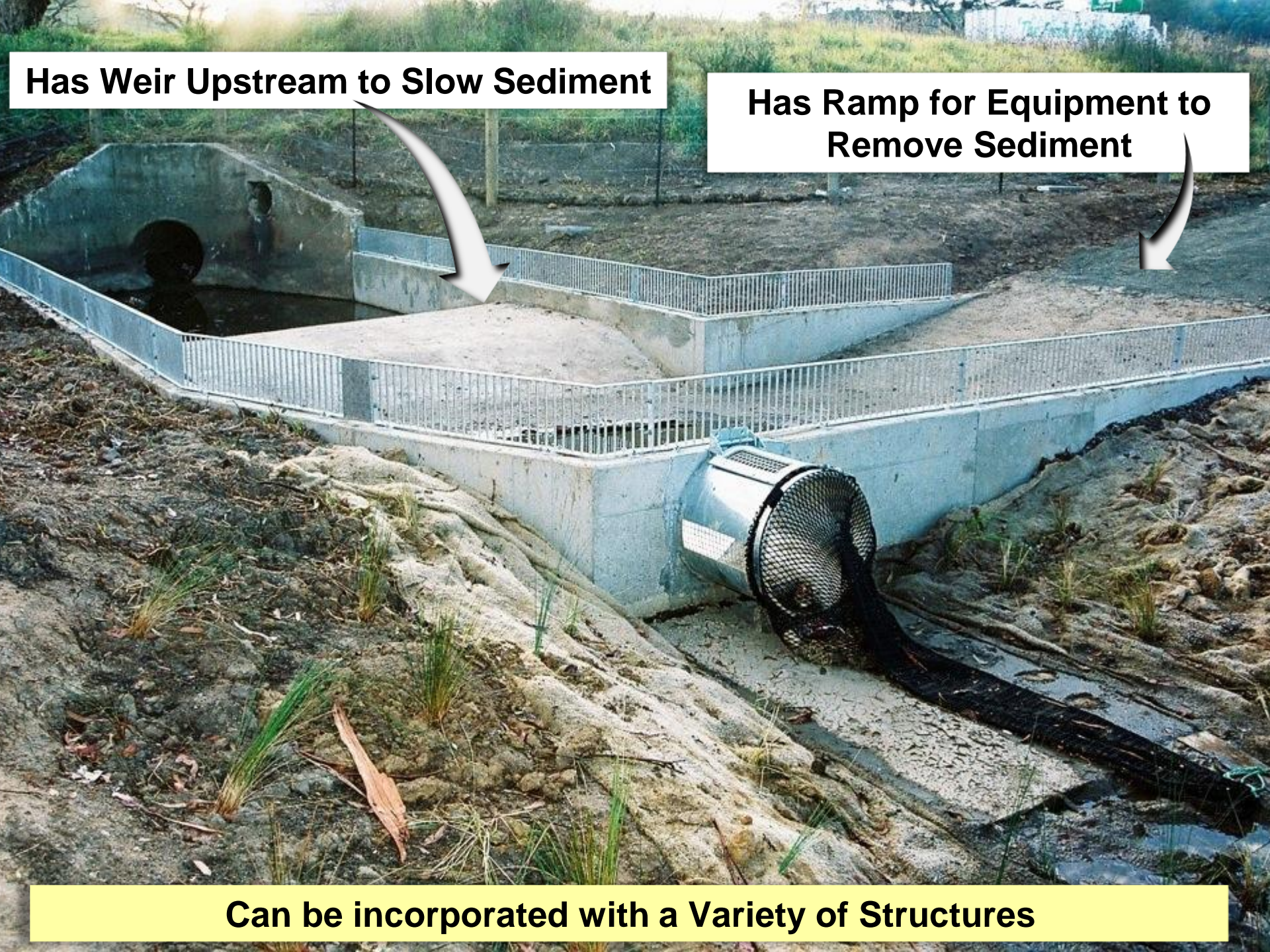




**Has Weir Upstream to Slow Sediment**

**Has Ramp for Equipment to Remove Sediment**

**Can be incorporated with a Variety of Structures**





**Adaptable for various sites**



# Questions?

Gary Hopkins

[ghopkins@stormwatersystems.com](mailto:ghopkins@stormwatersystems.com)

