

**ANJEC Environmental Congress  
September 27, 2024**



**Camden**



**to the**



**Cape**

Presented by:





# CROSS CAMDEN COUNTY TRAIL

## FEASIBILITY PLAN



THE  
CIRCUIT  
TRAILS

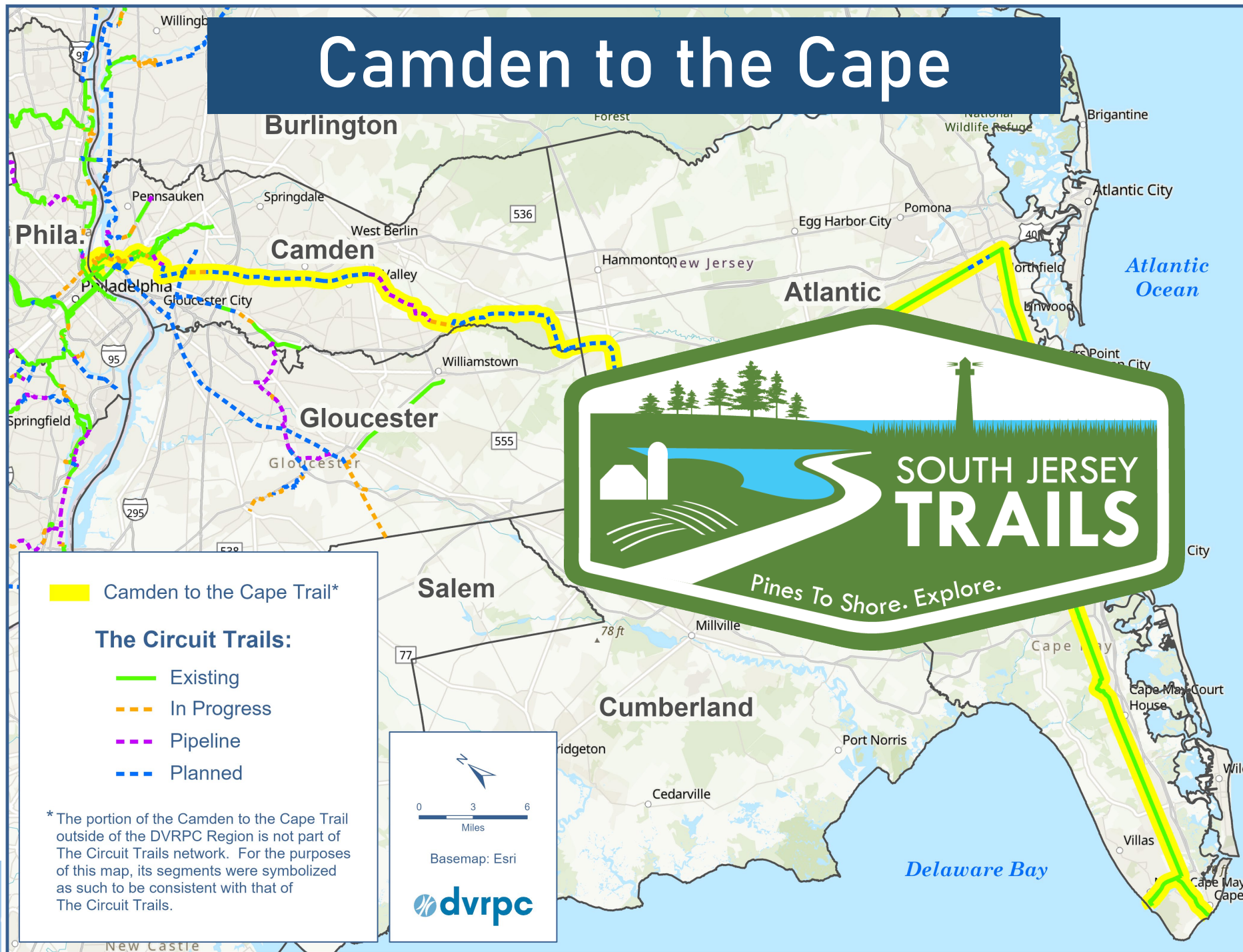


camden county  
Making It Greener, Together.  
BOARD OF FREEHOLDERS

JUNE 2017



# Camden to the Cape



**Camden to the Cape Trail\***

**The Circuit Trails:**

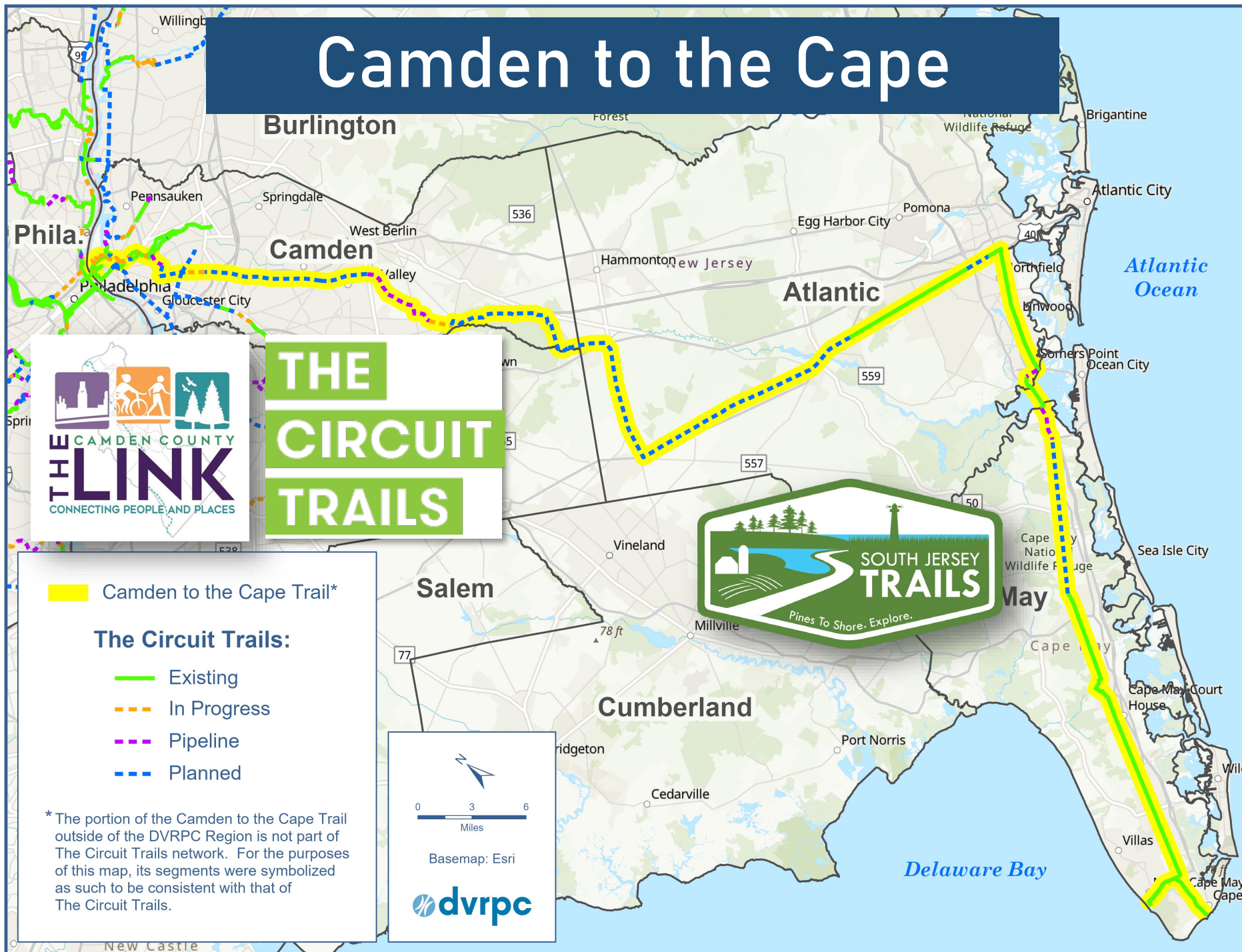
- Existing
- In Progress
- Pipeline
- Planned


\* The portion of the Camden to the Cape Trail outside of the DVRPC Region is not part of The Circuit Trails network. For the purposes of this map, its segments were symbolized as such to be consistent with that of The Circuit Trails.

0 3 6  
Miles





Basemap: Esri

# Camden to the Cape



 Camden to the Cape Trail\*

**The Circuit Trails:**

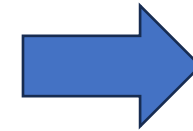
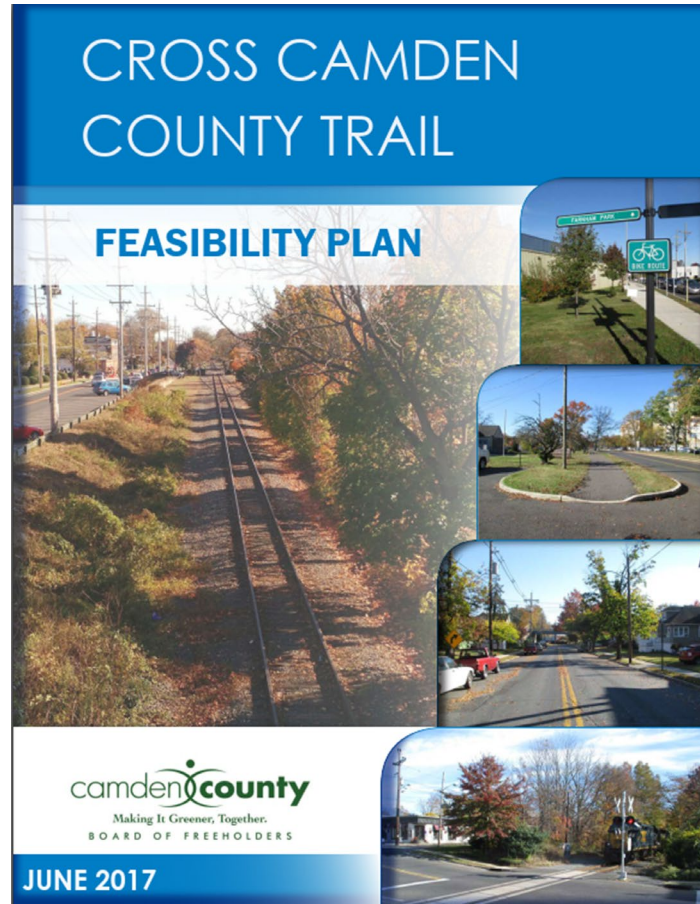
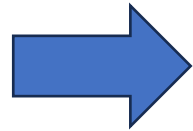
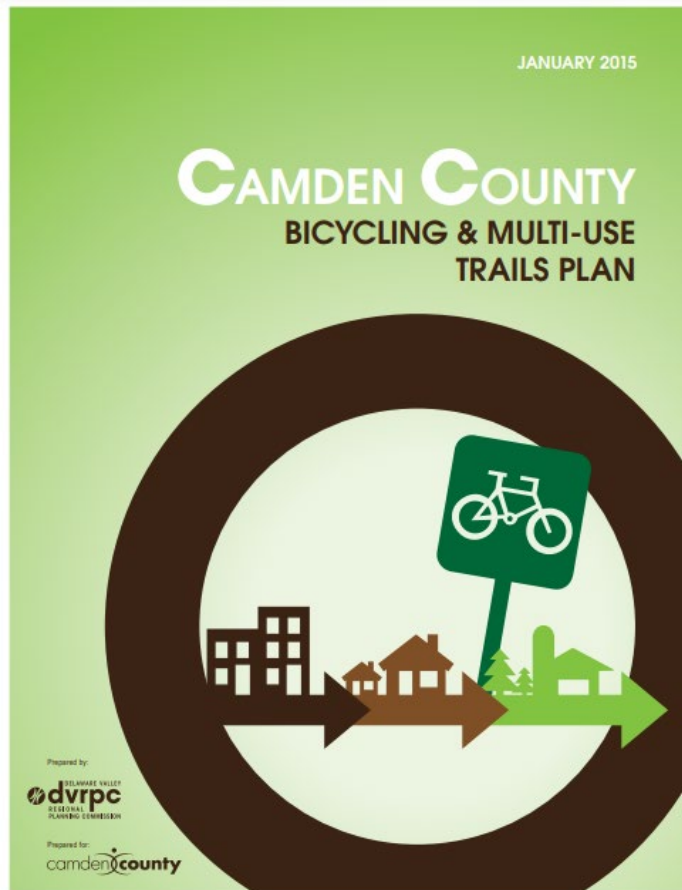
-  Existing
-  In Progress
-  Pipeline
-  Planned

\* The portion of the Camden to the Cape Trail outside of the DVRPC Region is not part of The Circuit Trails network. For the purposes of this map, its segments were symbolized as such to be consistent with that of The Circuit Trails.

Basemap: Esri



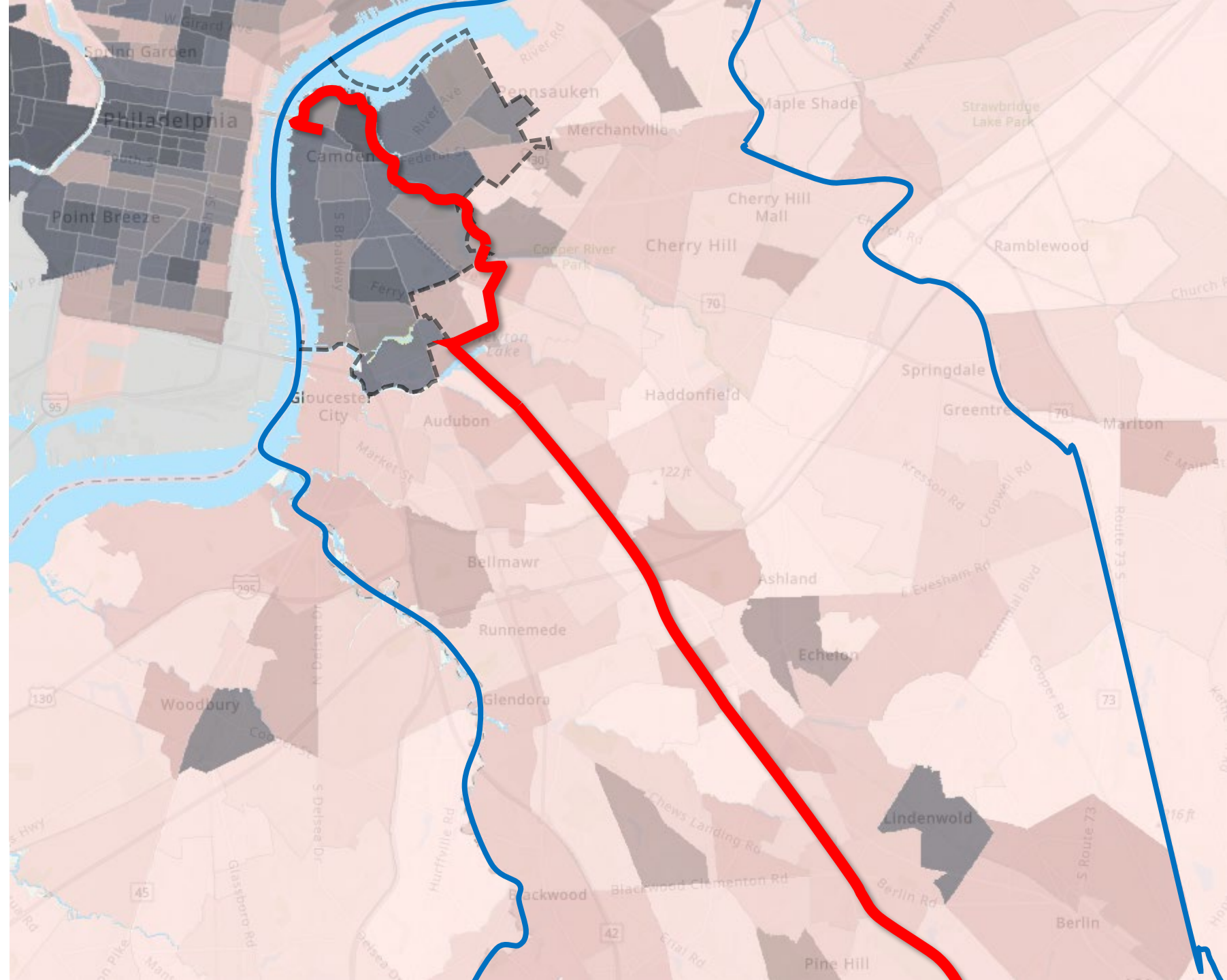
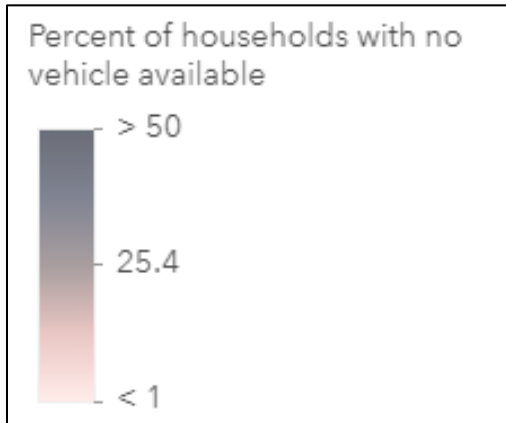
# Camden County LINK Trail





# Transportation

City of Camden has one of the highest densities of households with no vehicle available





# Connections

Resolves barriers to walking & bicycling at:

- US 30
- US 676
- US 130

New crossings of Cooper River:

- Near Flanders Ave.
- Near Pine St.
- At Baird Blvd.





# Economic Impact\*

- Over \$19.5 million per year into Camden County's local economy through tourist spending
- Add 114 jobs along the route
- \$963,000 in local and state taxes per year
- Property value increase of over \$14.0 million each year



\*Estimates from 2017



# RAISE Grant



*Camden to the Cape: Connecting South Jersey Through Trails*





[www.SJTPO.org/SouthJerseyTrails](http://www.SJTPO.org/SouthJerseyTrails)



South Jersey  
Transportation  
Planning Organization



New Jersey  
Bike & Walk  
Coalition



**rails-to-trails**  
conservancy



Integrated Marketing & Design



**CROSS  
COUNTY  
CONNECTION**

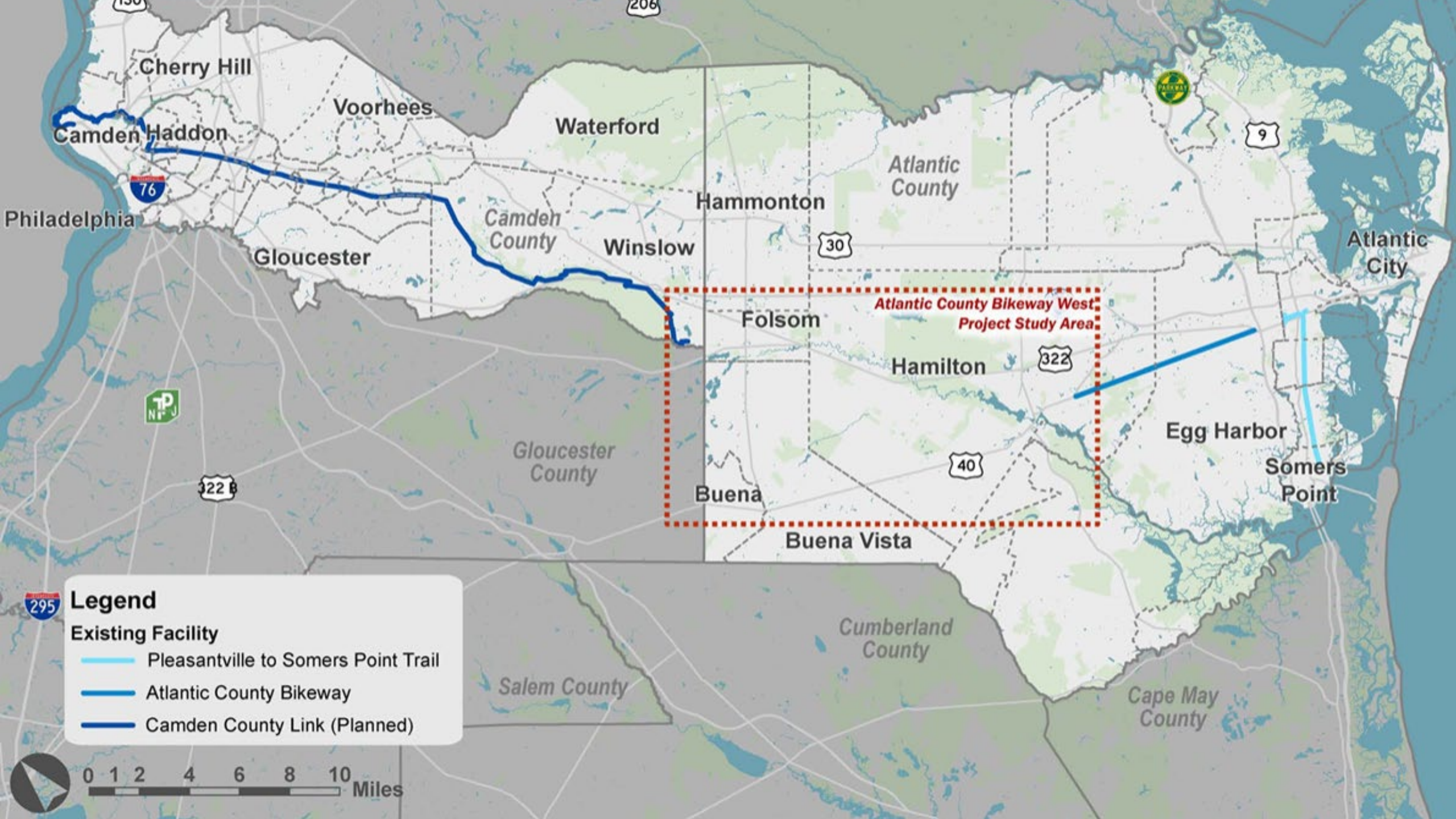
TRANSPORTATION MANAGEMENT ASSOCIATION



**TransPro**




*Driving Excellence*

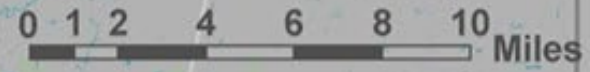
*Camden to the Cape: Connecting South Jersey Through Trails*



### Legend

#### Existing Facility

-  Pleasantville to Somers Point Trail
-  Atlantic County Bikeway
-  Camden County Link (Planned)

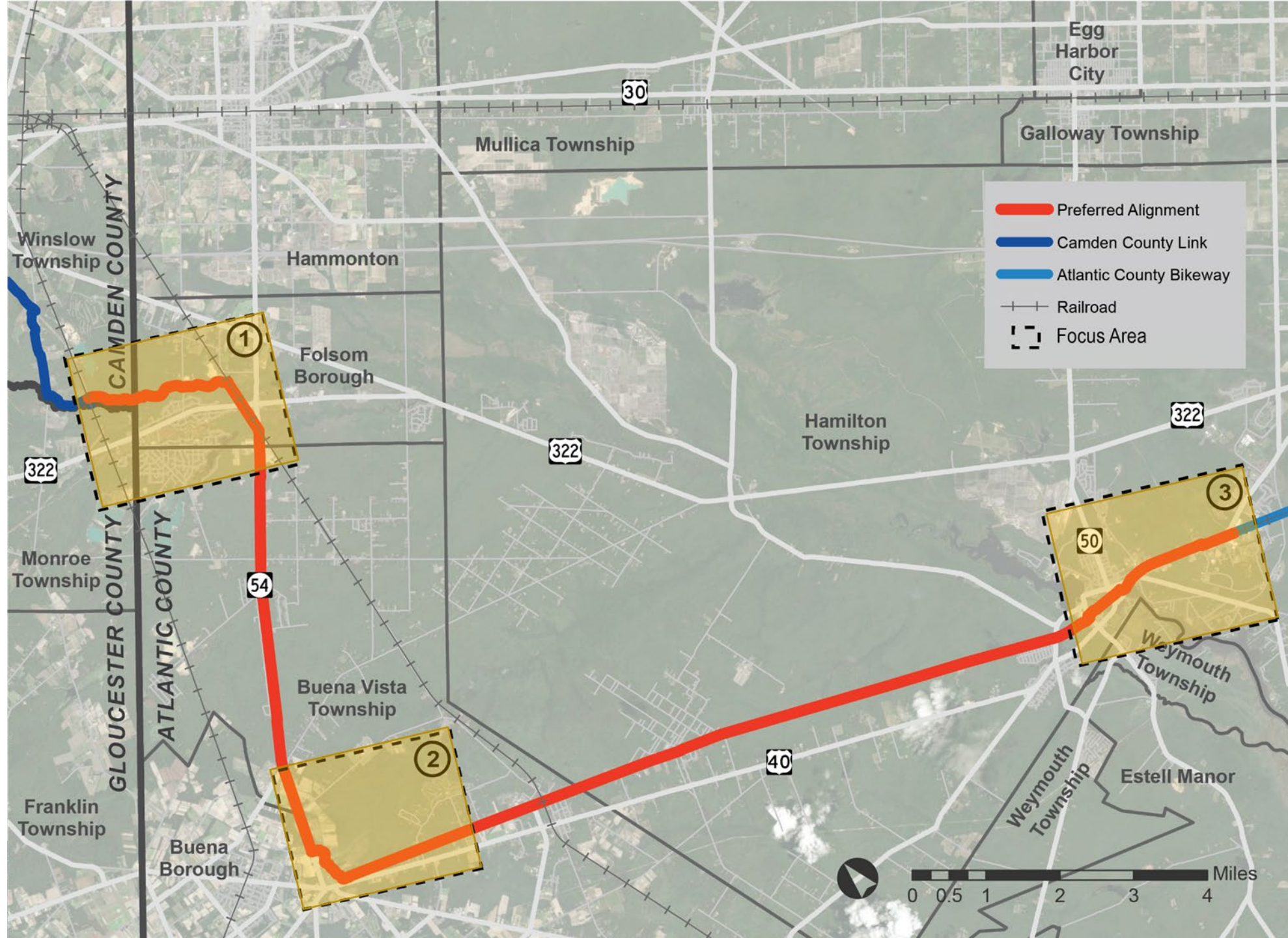




# Proposed Alignment

22.3 miles

- Winslow Township
- Folsom Borough
- Buena Vista Township
- Hamilton Township





# Trailheads

- New Parking
- Existing Parking
- Rest Area
- Points of Interest

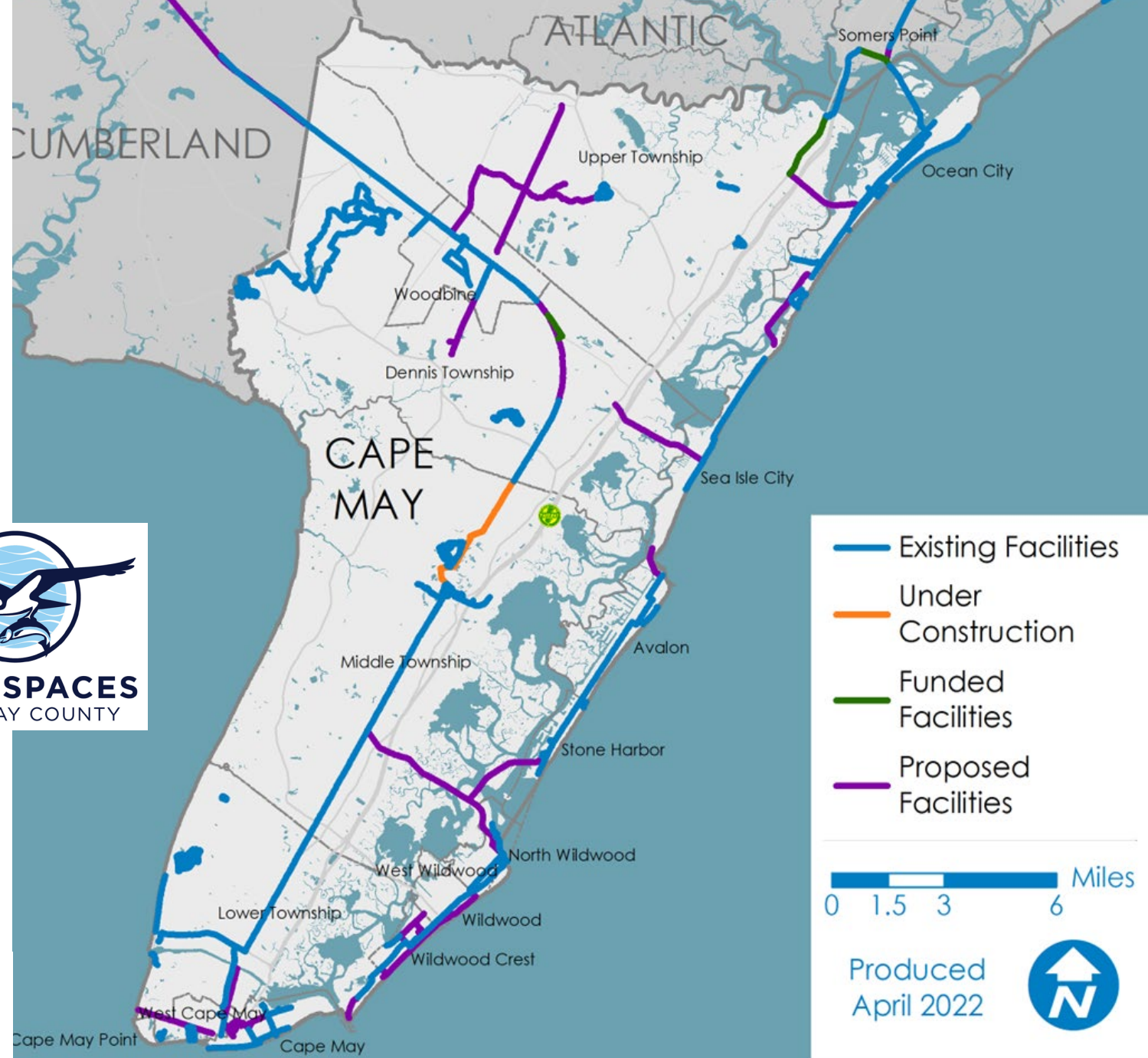
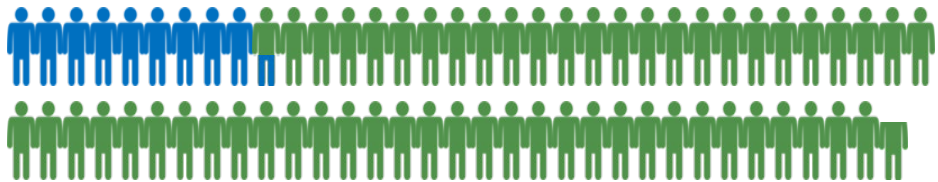




# Cape May County

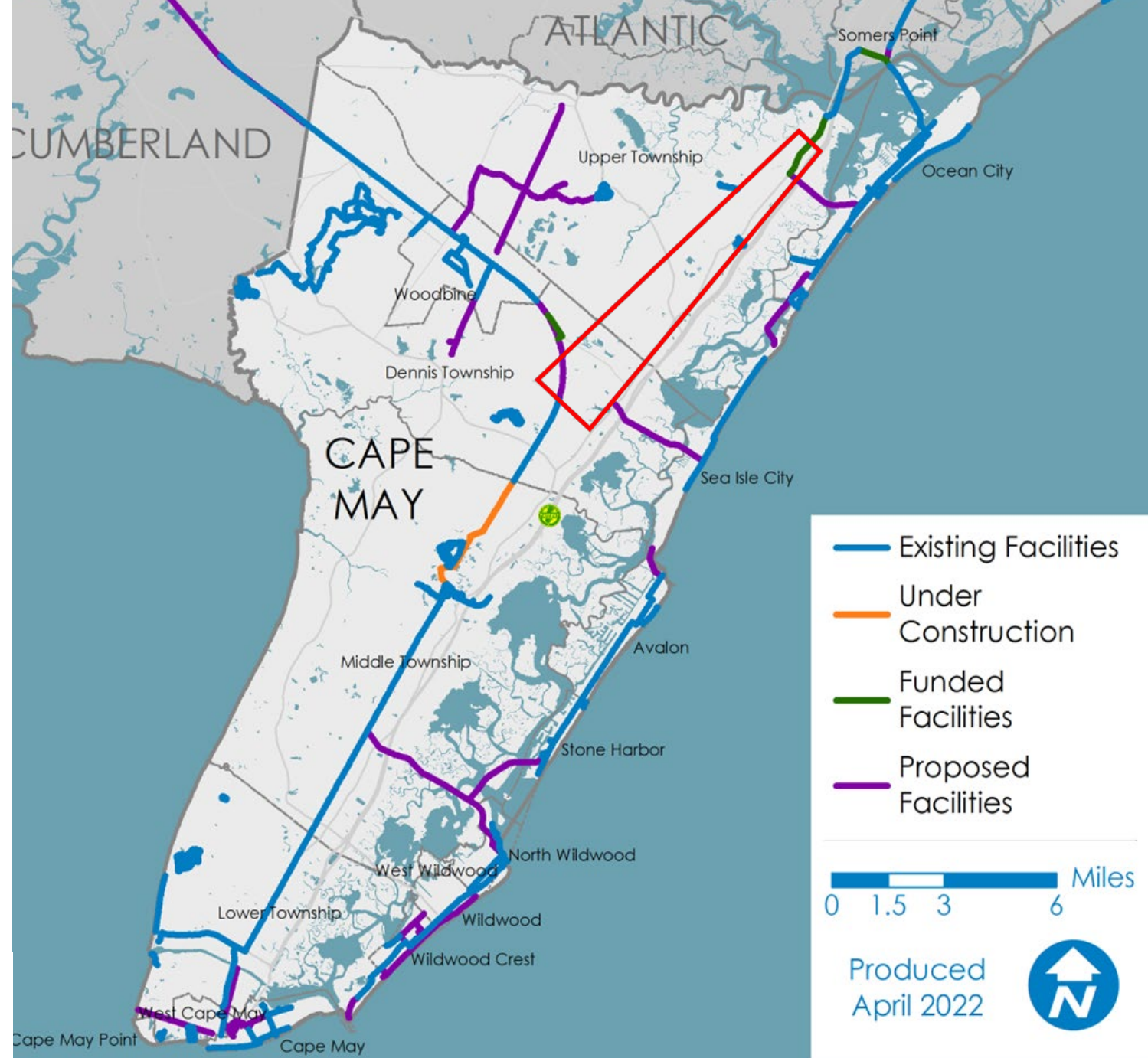
- Significant investment
  - Time
  - Energy
  - Funding
- Tourism-based Economy

**95k year-round**  
**800k summer peak**



# Cape May County Trails Feasibility Study

- Environmental constraints
  - CAFRA
  - Pinelands
  - Wetlands
  - US Fish and Wildlife
- Compact development
- Busy shore corridors throughout



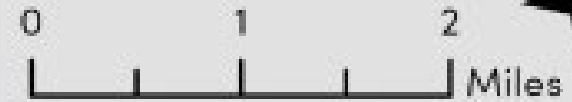


# Proposed Multi-Use Trail

- On-Road
- Off-Road
- Path
- Rail Trail
- Boardwalk



Trailhead

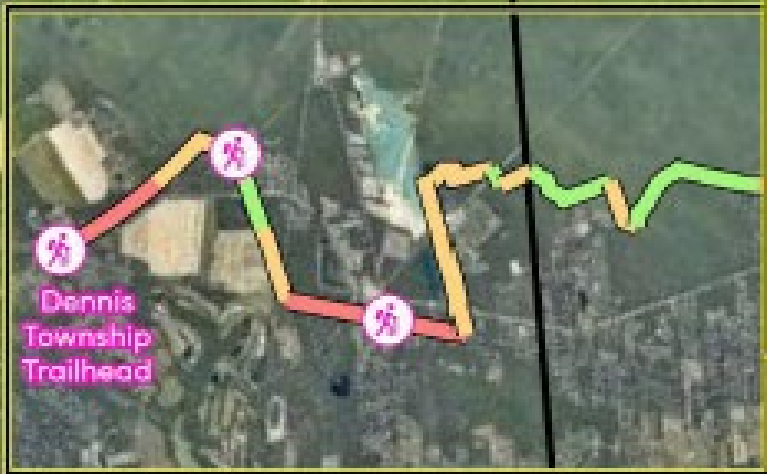


N



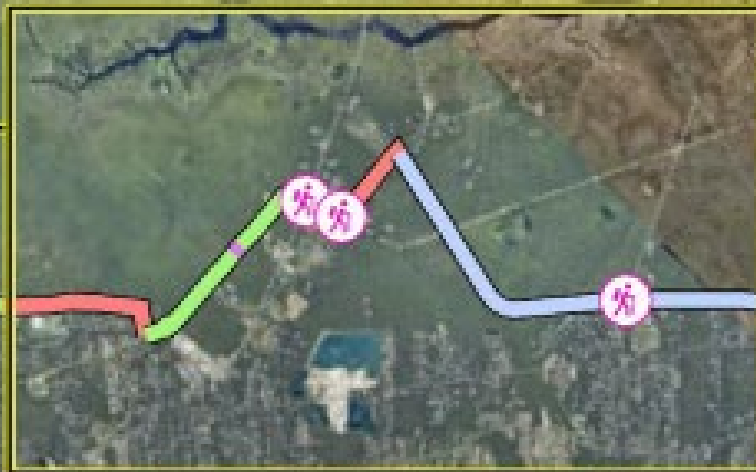
Upper Township

Egg Harbor Township



Focus Area #3

Dennis Township



Focus Area #2








Focus Area #1

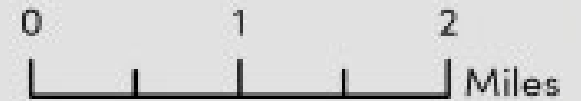
Beesley's Point Park Trailhead

Ocean City



## Planned Trail Phasing

-  Beesley's Point Trailhead to Rail Crossing of Tuckahoe Road
-  Rail Crossing at Tuckahoe Road to Rail/Trail Connection at Tyler Road
-  Rail/Trail Connection at Tyler Road to Trail Connection with Peach Orchard Road
-  Trail Connection at Peach Orchard Road to Trail Connection at Corsons Tavern Road
-  Trail Connection at Corsons Tavern Road to the Dennis Township Trailhead





# Coordination Is Critical

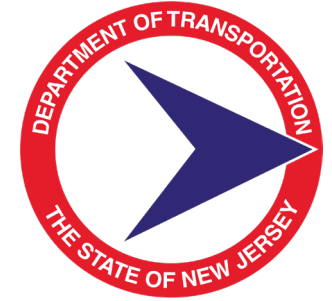


South Jersey  
Transportation  
Planning Organization



DELAWARE VALLEY  
**dvrpc**  
REGIONAL  
PLANNING COMMISSION

THE  
CIRCUIT  
TRAILS



**OPEN SPACES**  
CAPE MAY COUNTY



camden **county**

Making It Better, Together.

TRI-STATE TRANSPORTATION CAMPAIGN



**CROSS  
COUNTY  
CONNECTION**  
TRANSPORTATION MANAGEMENT ASSOCIATION



**rails-to-trails**  
conservancy



*Camden to the Cape: Connecting South Jersey Through Trails*

## Learn more:

[CamdenCounty.com/trails](https://CamdenCounty.com/trails)

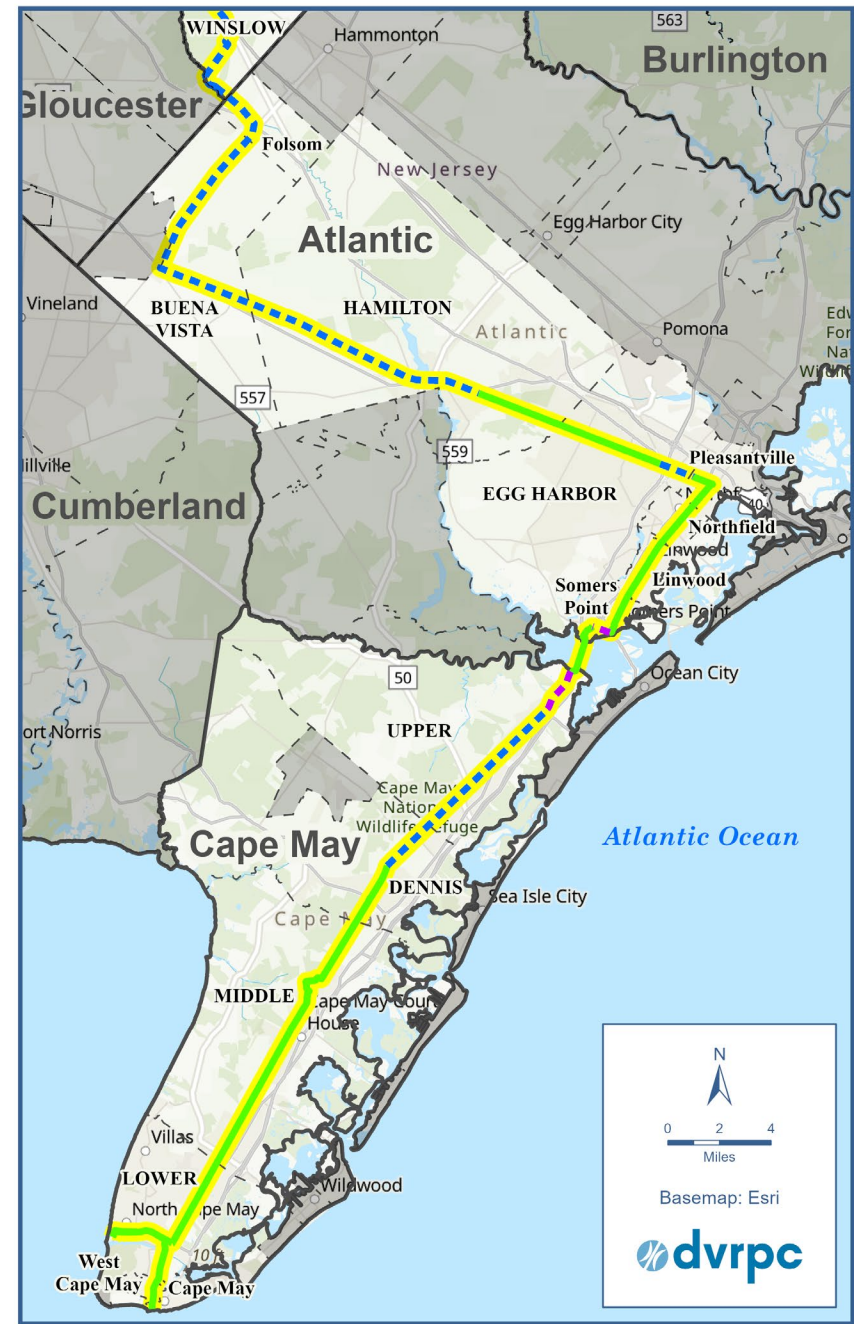
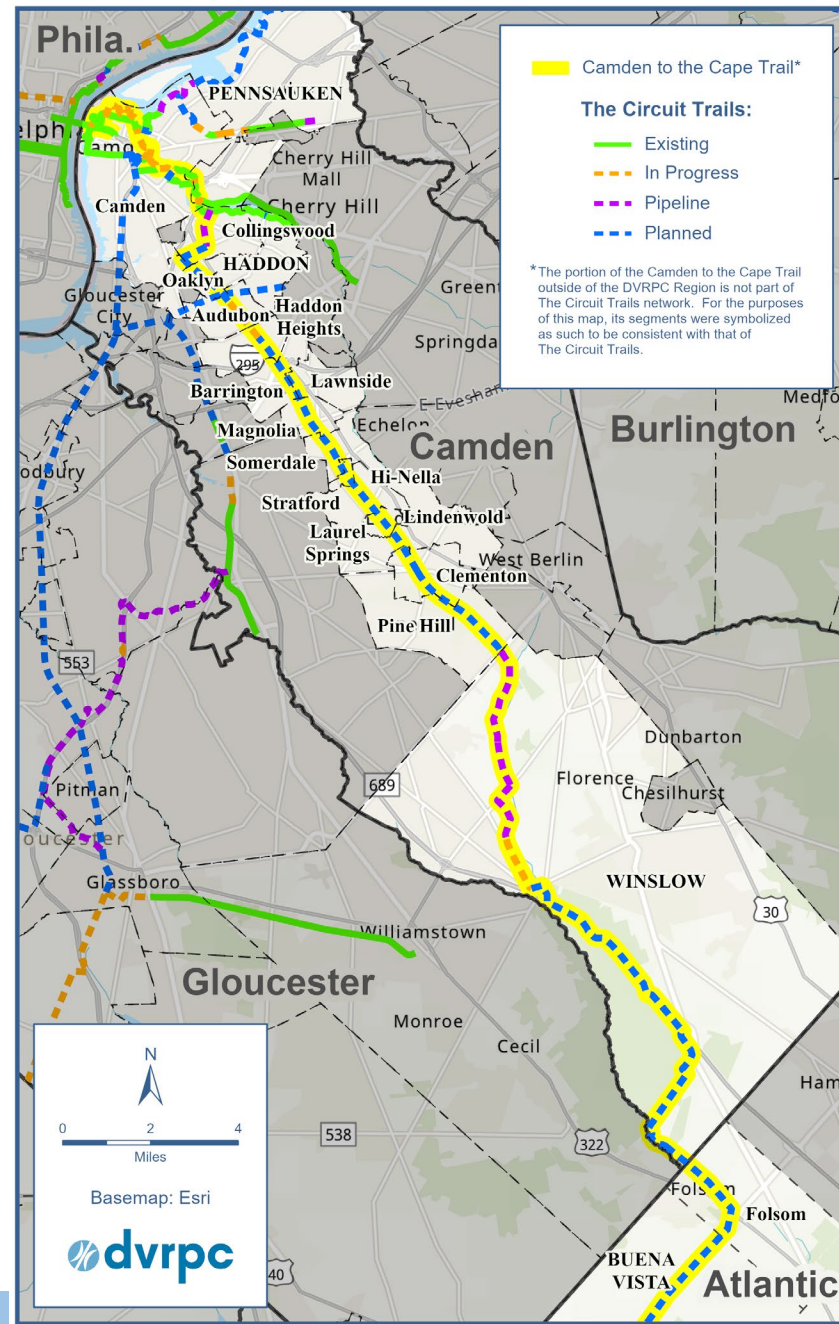


[SJTPO.org/SouthJerseyTrails](https://SJTPO.org/SouthJerseyTrails)





# Engage:



*Camden to the Cape: Connecting South Jersey Through Trails*



Use:



Credit: Daniel Paschall, East Coast Greenway Alliance

*Camden to the Cape: Connecting South Jersey Through Trails*



# Thank you!

## Contact:

Shawn Megill Legendre, AICP

Manager, Regional Trails Program

Delaware Valley Regional Planning Commission

[slegendre@dvrpc.org](mailto:slegendre@dvrpc.org)/215.238.2934

Jennifer Marandino, P.E.

Executive Director

South Jersey Transportation Planning Organization

[jmarandino@sjtpo.org](mailto:jmarandino@sjtpo.org)/856.794.1941 ext. 208