

September 27, 2024

# The Greenway

ANJEC Environmental  
Congress



[dep.nj.gov/greenway](https://dep.nj.gov/greenway)

- Subscribe for updates
- Frequently asked questions
- More detailed information







- **Urban State Parks and Initiatives Overview**
- **Takeaways from engagement and investigations**
- **Design Process and Updates**
- **Q&A**

# Urban State Parks & Initiatives

SPFHS Urban State Parks & Initiatives is focused on improving Liberty State Park and developing newly acquired properties to act as resilient, equitable community gathering spaces, delivering environmental and public health benefits in the state's most densely populated areas.



## Liberty State Park Revitalization Program

*Jersey City*

- LSP-Interior: multi-year remediation and restoration, creating 200+ ecological park within a park.
- LSP-North: Priorities amenities including the historic train shed, circulation and active recreation elements
- LSP-South and Waterfront: Master Planning for entire park underway



## Greenway

*Montclair, Glen Ridge, Belleville, Bloomfield,  
Newark, Kearny, Secaucus, Jersey City*

- Acquired on August 19, 2022
- Nine miles of abandoned rail line to be transformed into an open space and transportation corridor
- Preliminary community engagement, site investigation, and design from 2023 to present
- Anticipated groundbreaking on initial phase of development mid-2025 in Newark

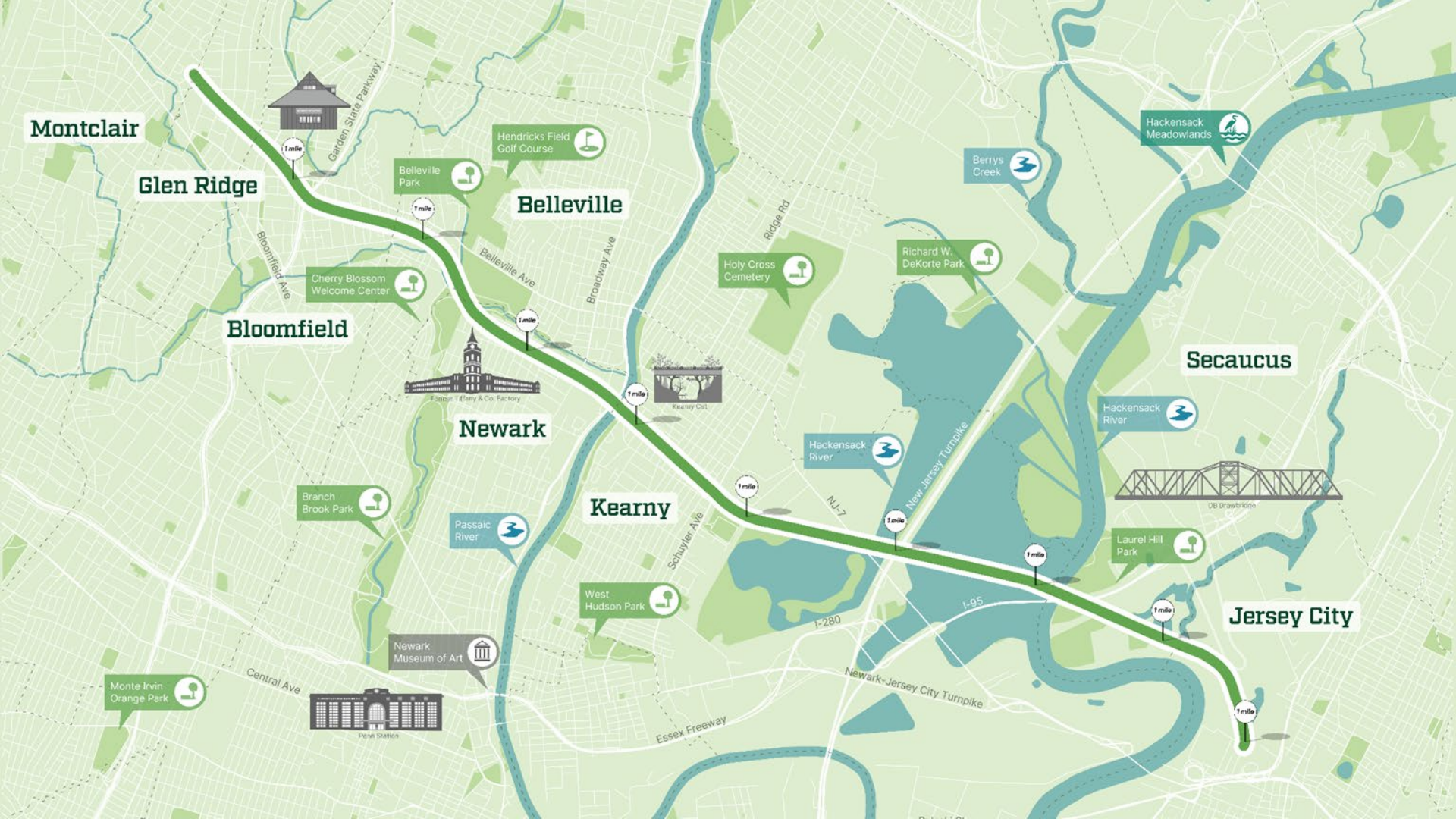


## Camden Waterfront

*Camden*

- First parcels acquired December 2022
- Vision of state and local agencies and non-profits to create a contiguous greenway along the Delaware and Cooper Rivers
- have funding and are currently in various stages of implementation of eight miles of a regional trail network and a 13-mile water trail





Montclair

Glen Ridge

Bloomfield

Belleville

Newark

Kearny

Secaucus

Jersey City



Bloomfield Ave

Garden State Parkway

1 mile

Belleville Ave

1 mile

Broadway Ave

1 mile

Schuyler Ave

1 mile

NJ-7

1 mile

I-280

I-95

1 mile

1 mile

1 mile

Ridge Rd

Newark-Jersey City Turnpike

New Jersey Turnpike

Old Drawbridge

Penn Station

Folger, Eddy & Co. Factory

Keeney Ckt

Hackensack River

Laurel Hill Park

Hackensack Meadowlands

Berrys Creek

Hackensack River

Monte Irvin Orange Park

Cherry Blossom Welcome Center

Hendricks Field Golf Course

Belleville Park

Holy Cross Cemetery

Richard W. DeKorte Park

Branch Brook Park

Passaic River

West Hudson Park

Newark Museum of Art

Hackensack Meadowlands

Berrys Creek

Hackensack River

Laurel Hill Park

Hackensack River

Monte Irvin Orange Park

Cherry Blossom Welcome Center

Hendricks Field Golf Course

Belleville Park

Holy Cross Cemetery

Richard W. DeKorte Park

Branch Brook Park

Passaic River

West Hudson Park

Newark Museum of Art

Hackensack Meadowlands

Berrys Creek

Hackensack River

Laurel Hill Park

Hackensack River

Monte Irvin Orange Park

Cherry Blossom Welcome Center

Hendricks Field Golf Course

Belleville Park

Holy Cross Cemetery

Richard W. DeKorte Park

Branch Brook Park

Passaic River

West Hudson Park

Newark Museum of Art

Hackensack Meadowlands

Berrys Creek

Hackensack River

Laurel Hill Park

Hackensack River

Monte Irvin Orange Park

Cherry Blossom Welcome Center

Hendricks Field Golf Course

Belleville Park

Holy Cross Cemetery

Richard W. DeKorte Park

Branch Brook Park

Passaic River

West Hudson Park

Newark Museum of Art

Hackensack Meadowlands

Berrys Creek

Hackensack River

Laurel Hill Park

Hackensack River

Monte Irvin Orange Park

Cherry Blossom Welcome Center

Hendricks Field Golf Course

Belleville Park

Holy Cross Cemetery

Richard W. DeKorte Park

Branch Brook Park

Passaic River

West Hudson Park

Newark Museum of Art

Hackensack Meadowlands

Berrys Creek

Hackensack River

Laurel Hill Park

Hackensack River

Monte Irvin Orange Park

Cherry Blossom Welcome Center

Hendricks Field Golf Course

Belleville Park

Holy Cross Cemetery

Richard W. DeKorte Park

Branch Brook Park

Passaic River

West Hudson Park

Newark Museum of Art

Hackensack Meadowlands

Berrys Creek

Hackensack River

Laurel Hill Park

Hackensack River

Monte Irvin Orange Park

Cherry Blossom Welcome Center

Hendricks Field Golf Course

Belleville Park

Holy Cross Cemetery

Richard W. DeKorte Park

Branch Brook Park

Passaic River

West Hudson Park

Newark Museum of Art

Hackensack Meadowlands

Berrys Creek

Hackensack River

Laurel Hill Park

Hackensack River

Monte Irvin Orange Park

Cherry Blossom Welcome Center

Hendricks Field Golf Course

Belleville Park

Holy Cross Cemetery

Richard W. DeKorte Park

Branch Brook Park

Passaic River

West Hudson Park

Newark Museum of Art

Hackensack Meadowlands

Berrys Creek

Hackensack River

Laurel Hill Park

Hackensack River

Monte Irvin Orange Park

Cherry Blossom Welcome Center

Hendricks Field Golf Course

Belleville Park

Holy Cross Cemetery

Richard W. DeKorte Park

Branch Brook Park

Passaic River

West Hudson Park

Newark Museum of Art

Hackensack Meadowlands

Berrys Creek

Hackensack River

Laurel Hill Park

Hackensack River

Monte Irvin Orange Park

Cherry Blossom Welcome Center

Hendricks Field Golf Course

Belleville Park

Holy Cross Cemetery

Richard W. DeKorte Park

Branch Brook Park

Passaic River

West Hudson Park

Newark Museum of Art

Hackensack Meadowlands

Berrys Creek

Hackensack River

Laurel Hill Park

Hackensack River

Monte Irvin Orange Park

Cherry Blossom Welcome Center

Hendricks Field Golf Course

Belleville Park

Holy Cross Cemetery

Richard W. DeKorte Park

Branch Brook Park

Passaic River

West Hudson Park

Newark Museum of Art

Hackensack Meadowlands

Berrys Creek

Hackensack River

Laurel Hill Park

Hackensack River

Monte Irvin Orange Park

Cherry Blossom Welcome Center

Hendricks Field Golf Course

Belleville Park

Holy Cross Cemetery

Richard W. DeKorte Park

Branch Brook Park

Passaic River

West Hudson Park

Newark Museum of Art

Hackensack Meadowlands

Berrys Creek

Hackensack River

Laurel Hill Park

Hackensack River

Monte Irvin Orange Park

Cherry Blossom Welcome Center

Hendricks Field Golf Course

Belleville Park

Holy Cross Cemetery

Richard W. DeKorte Park

Branch Brook Park

Passaic River

West Hudson Park

Newark Museum of Art

Hackensack Meadowlands

Berrys Creek

Hackensack River

Laurel Hill Park

Hackensack River

Monte Irvin Orange Park

Cherry Blossom Welcome Center

Hendricks Field Golf Course

Belleville Park

Holy Cross Cemetery

Richard W. DeKorte Park

Branch Brook Park

Passaic River

West Hudson Park

Newark Museum of Art

Hackensack Meadowlands

Berrys Creek

Hackensack River

Laurel Hill Park

Hackensack River

Monte Irvin Orange Park

Cherry Blossom Welcome Center

Hendricks Field Golf Course

Belleville Park

Holy Cross Cemetery

Richard W. DeKorte Park

Branch Brook Park

Passaic River

West Hudson Park

Newark Museum of Art

Hackensack Meadowlands

Berrys Creek

Hackensack River

Laurel Hill Park

Hackensack River

Monte Irvin Orange Park

Cherry Blossom Welcome Center

Hendricks Field Golf Course

Belleville Park

Holy Cross Cemetery

Richard W. DeKorte Park

Branch Brook Park

Passaic River

West Hudson Park

Newark Museum of Art

Hackensack Meadowlands

Berrys Creek

Hackensack River

Laurel Hill Park

Hackensack River

Monte Irvin Orange Park

Cherry Blossom Welcome Center

Hendricks Field Golf Course

Belleville Park

Holy Cross Cemetery

Richard W. DeKorte Park

Branch Brook Park

Passaic River

West Hudson Park

Newark Museum of Art

Hackensack Meadowlands

Berrys Creek

Hackensack River

Laurel Hill Park

Hackensack River

Monte Irvin Orange Park

Cherry Blossom Welcome Center

Hendricks Field Golf Course

Belleville Park

Holy Cross Cemetery

Richard W. DeKorte Park

Branch Brook Park

Passaic River

West Hudson Park

Newark Museum of Art

Hackensack Meadowlands

Berrys Creek

Hackensack River



OUTREACH

# Thousands of Voices



# Outreach

**8** Community Listening Session Workshops

Workshops connected with over **800** people

**18**

Pop-Up Listening Sessions

**171**

Businesses Reached

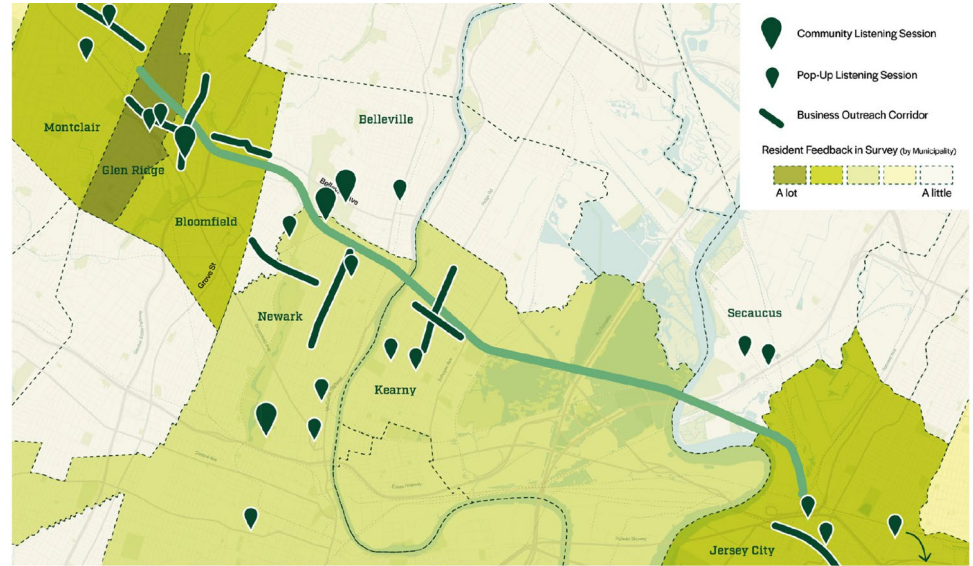
**13** Advocacy Group Meetings

**1** Trail Test

**1** Youth Visioning Session

**23** Agency and Municipality Meetings

**568**  
Survey Respondents



Pop-Up/Event Locations and Business Outreach along Commercial Corridors



# Greenway Themes

## Across Public Outreach Events and Survey



### Connect

What type of connections would you like to see on the Greenway?  
What are your concerns about connections?

Feedback so far!

- "I'd like to see more connections to the transit system." - [Name]
- "I'd like to see more connections to the transit system." - [Name]
- "I'd like to see more connections to the transit system." - [Name]
- "I'd like to see more connections to the transit system." - [Name]
- "I'd like to see more connections to the transit system." - [Name]

### Relax

What type of relaxing activities would you like to see on the Greenway?  
What are your concerns about relaxing activities?

Feedback so far!

- "I'd like to see more relaxing activities on the Greenway." - [Name]
- "I'd like to see more relaxing activities on the Greenway." - [Name]
- "I'd like to see more relaxing activities on the Greenway." - [Name]
- "I'd like to see more relaxing activities on the Greenway." - [Name]
- "I'd like to see more relaxing activities on the Greenway." - [Name]

### Play

What type of play activities would you like to see on the Greenway?  
What are your concerns about play activities?

Feedback so far!

- "I'd like to see more play activities on the Greenway." - [Name]
- "I'd like to see more play activities on the Greenway." - [Name]
- "I'd like to see more play activities on the Greenway." - [Name]
- "I'd like to see more play activities on the Greenway." - [Name]
- "I'd like to see more play activities on the Greenway." - [Name]

### Gather

What type of gathering activities would you like to see on the Greenway?  
What are your concerns about gathering activities?

Feedback so far!

- "I'd like to see more gathering activities on the Greenway." - [Name]
- "I'd like to see more gathering activities on the Greenway." - [Name]
- "I'd like to see more gathering activities on the Greenway." - [Name]
- "I'd like to see more gathering activities on the Greenway." - [Name]
- "I'd like to see more gathering activities on the Greenway." - [Name]

# Stay tuned!

Community dialogue continues this fall and winter. We will share more at the end of this presentation.

Site preparations and construction activity anticipated next year!





# Site Analysis and Design



# Understanding Nine Miles



Conversations with  
Municipal Leaders



Field Observations  
and On - The - Ground  
Data



Community  
Conversations



Technical Expertise  
and analysis

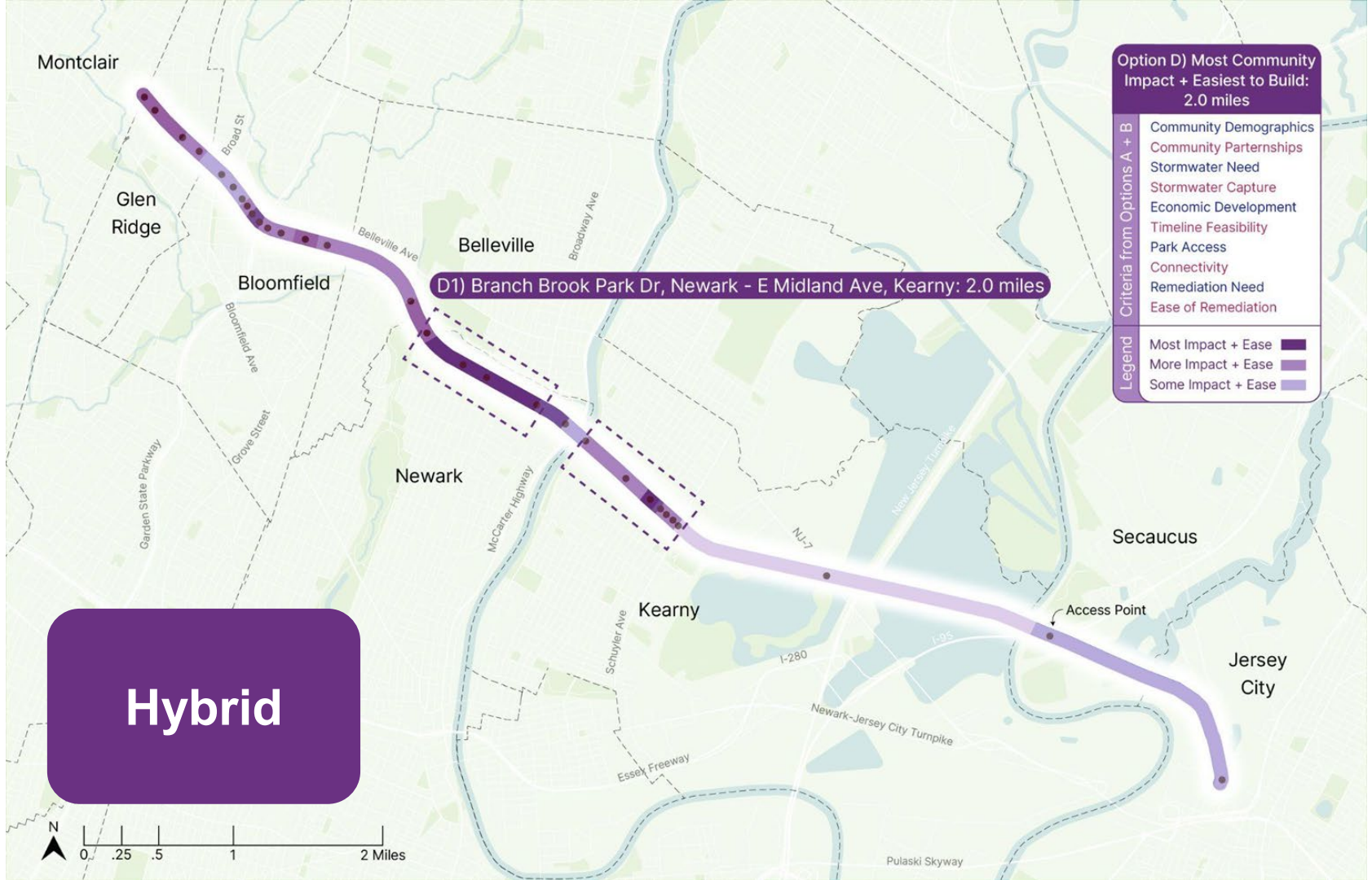


# Phase 1B Key Factors

~2 miles of Greenway  
to be constructed by  
the end of 2025

Has a highly positive  
impact across a  
variety of metrics

Delivers the “wow” factors  
that will embed the  
Greenway in the hearts of  
New Jerseyans



**Option D) Most Community Impact + Easiest to Build: 2.0 miles**

- Criteria from Options A + B**
- Community Demographics
  - Community Partnerships
  - Stormwater Need
  - Stormwater Capture
  - Economic Development
  - Timeline Feasibility
  - Park Access
  - Connectivity
  - Remediation Need
  - Ease of Remediation

- Legend**
- Most Impact + Ease
  - More Impact + Ease
  - Some Impact + Ease

**D1) Branch Brook Park Dr, Newark - E Midland Ave, Kearny: 2.0 miles**

**Hybrid**



# Phase 1B Plan Overview



**Phase 1B West:**  
Branch Brook Park to Broadway, Newark  
Surface Area: 487,460 square feet  
Length: 4,347 feet  
Average right-of-way width: 100 feet

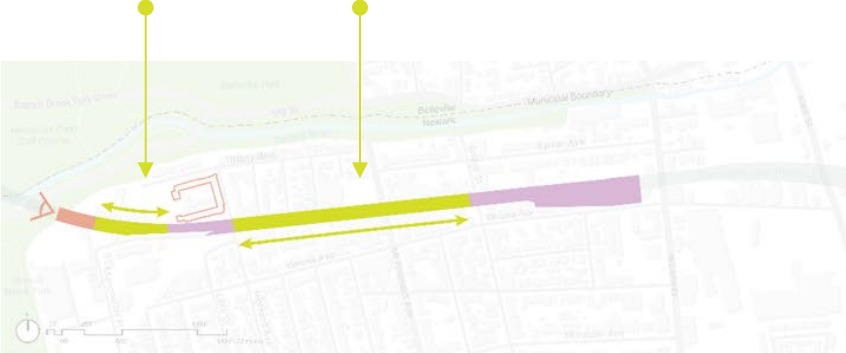
**Phase 1B Central:**  
Passaic Ave to Forest Street, Kearny  
Usable Surface Area: 172,175 square feet  
Length: 3,602 feet  
Average right-of-way width: 122 feet

**Phase 1B East:**  
Forest Street to Meadowlands Edge  
Usable Surface Area: 106,354 square feet  
Length: 2,300 feet  
Average right-of-way width: 110 feet

# Connections:

Provide a continuous experience highlighting the unique landscape character of their surroundings

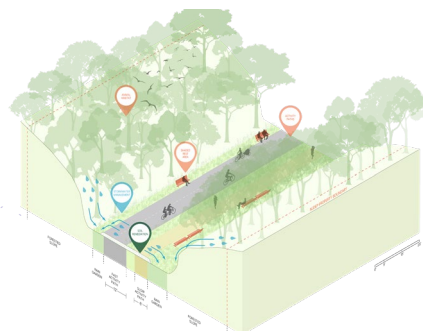
Newark urban edges



Kearny Cut



Approach to Meadowlands





# Overlooks:

Greenway rooms that provide an intriguing glimpse into future extensions, connections and experiences.

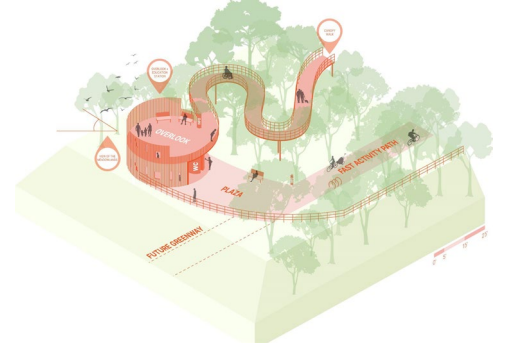
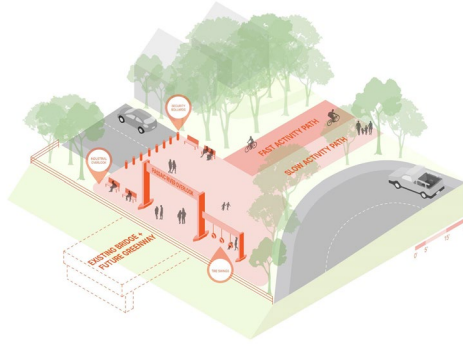
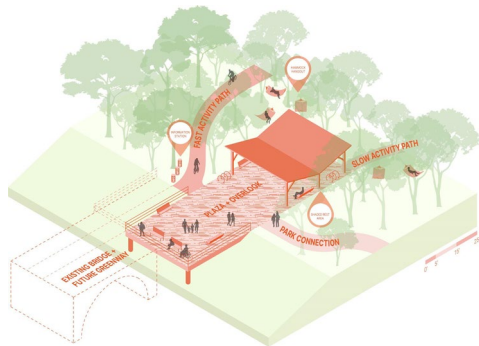
Branch Brook Park Overlook



Passaic River Overlook



Meadowlands Overlook



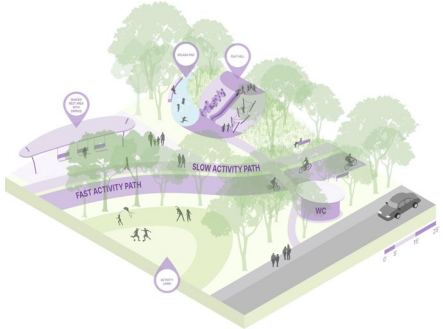
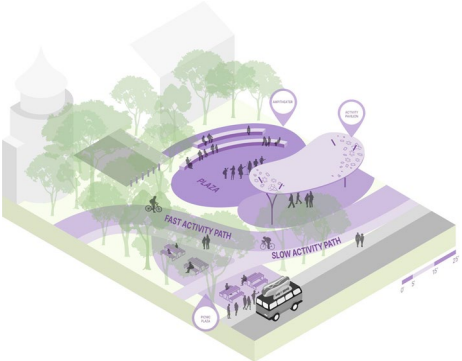
# Hub Places:

Serve as the centralized hubs of social, cultural and recreational programming.

Tiffany Manor Hub

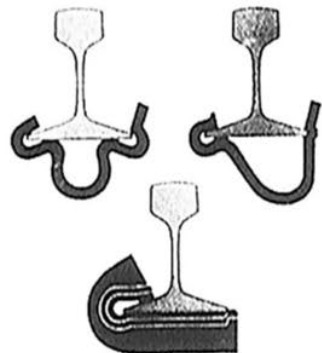
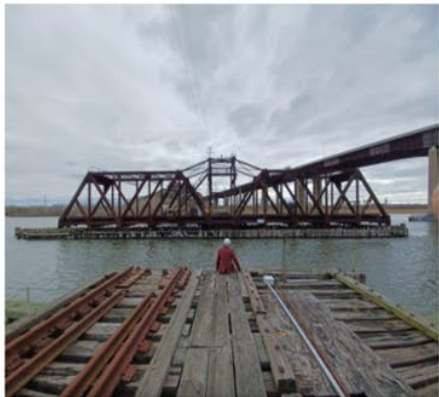
Newark Central Hub

Arlington Depot Hub





# Historic Inspiration



# Design Language



ICE



RAILS



TIES

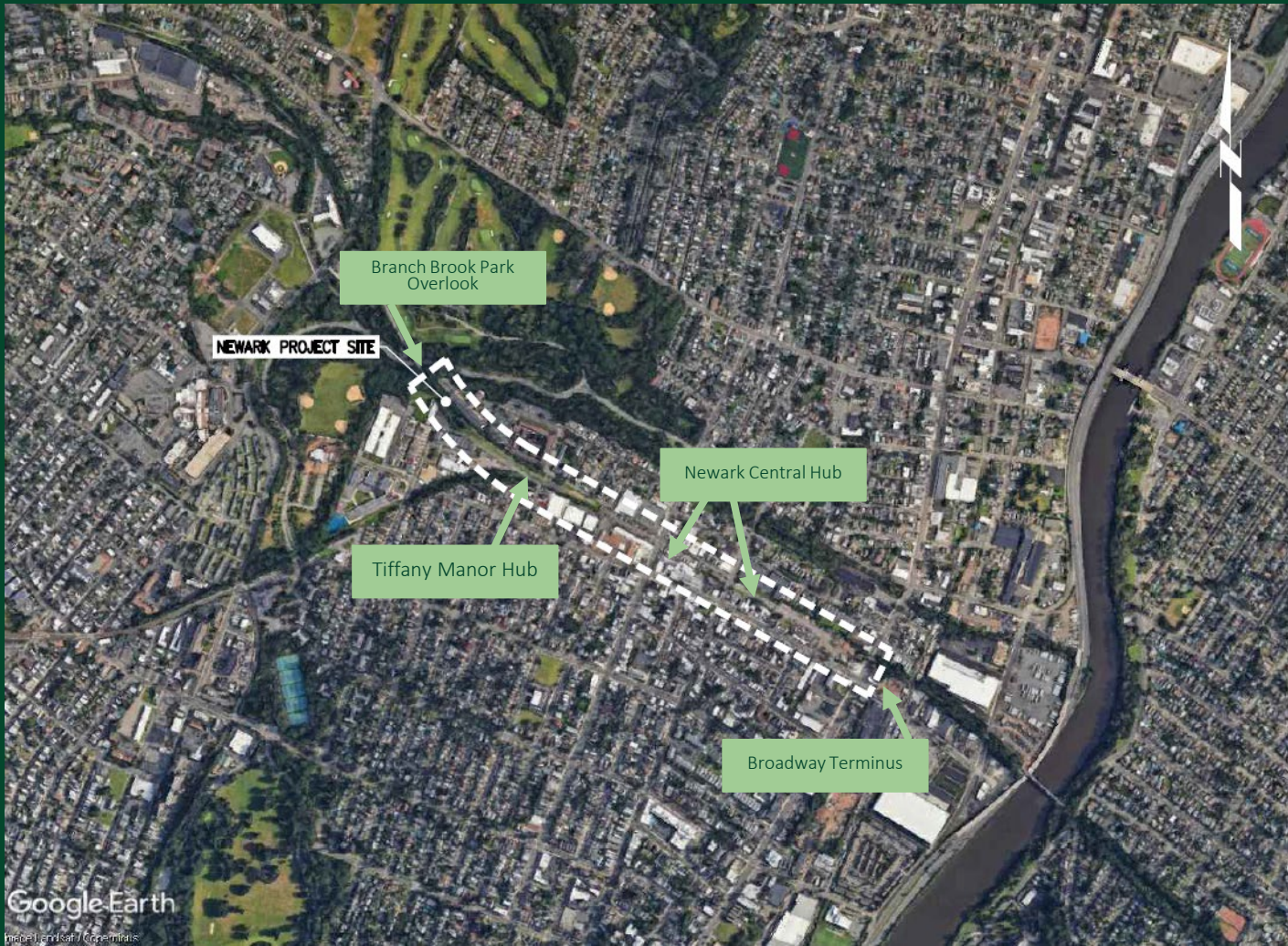
Humans



Nature



# Newark Section Overview





# Branch Brook Park Overlook





# Tiffany Manor Hub







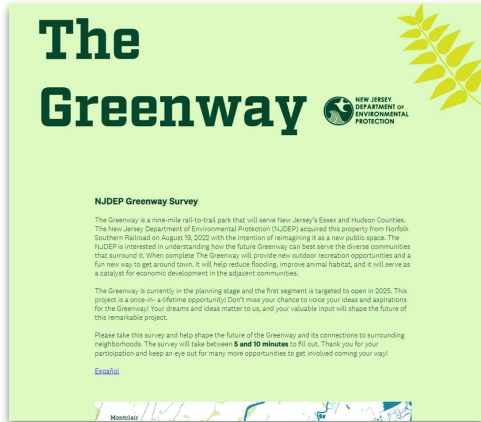
# Newark Central Hub





# What is next?

*As we work to finalize the design, we want to build awareness and identify design priorities with residents this fall.*



## Today!

Want to help get the word out about the Greenway? Sign up for the Greenway Newsletter to stay up-to-date!

## Fall 2024

Fall engagement online and in Newark. Detailed design continues to be developed.

## Winter 2024-2025

Design continues and construction bidding begins!